

Aqua Whisper DX Compact 450-1800

Section 10 - EXPLODED PARTS VIEW

10 EXPLODED PARTS VIEW

10.1 WHEN ORDERING

When ordering Parts or Accessories from your local Sea Recovery Dealer or from Sea Recovery direct, in order to save time and to ensure that you receive the correct part provide the following information:

System Model	System Style	System Production	System Serial #
Aqua Whisper	Compact	450-1 (one short 21 in. (53.3 cm) long R.O. Membrane Element)	Serial Number
Aqua Whisper	Compact	700-1 (one medium 31 in. (78.7 cm) long R.O. Membrane Element)	Serial Number
Aqua Whisper	Compact	900-1 (one long 40 in. (101.6 cm) long R.O. Membrane Element)	Serial Number
Aqua Whisper	Compact	900-2 (two short 21 in. (53.3 cm)" long R.O. Membrane Element)	Serial Number
Aqua Whisper	Compact	1400-2 (two medium 31" long R.O. Membrane Element)	Serial Number
Aqua Whisper	Compact	1800-2 (two long 40" long R.O. Membrane Element)	Serial Number

AND

SYSTEM INFORMATION FROM THE SYSTEM
INFORMATION SCREEN

SERIAL NUMBER helps us to determine the latest physical version and configuration of your system which is necessary to ensure that we provide you with the correct information or parts.

SIZE tells us the production capacity of your system which gives us a bench mark in diagnosing product water flow and pressure concerns.

FWF tells us if you have installed and are utilizing the Fresh Water Flush feature.

TOTAL TIME assists us in diagnosing abnormalities that can occur at given operational time intervals such as required pump maintenance, or R.O. membrane element condition.

DV Set Point helps us to determine if the R.O. membrane element is losing its rejection capabilities or if the 3-Way Product Water Diversion Solenoid Valve Set Point is simply adjusted too high or too low.

CONTROL VER allows us to determine the specific sequential operation of the system based on the version of the programmed control logic.

AND provide us with information on the part that you wish to order:

Part Number	Part Description	Quantity
-------------	------------------	----------

Having this information will expedite your request and ensure that you receive the correct part.

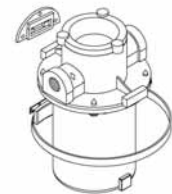
10.3 INSTALLATION KIT B001930001

ITEM	PART NO	DESCRIPTION	QTY	UM
1	061100043000	WASHER FLAT OS 1/4"SS	12.00	EACH
2	061172143016	SC HEX "A" 1/4 X 1 SS	12.00	EACH
3	05181432AA	HOSE CLAMP 1/2"	4.00	EACH
4	05181434AA	HOSE CLAMP 3/4" SS	14.00	EACH
5	061170628016	SC PHIL PAN "A" 10 X 1 SS	5.00	EACH
6	061080028000	WASHER FLAT #10 SS	5.00	EACH
7	B651930001	OWNERS MANUAL AQWC-DX	1.00	EACH
8	B645800001	MCC-1 ALKALINE CLEANER	1.00	EACH
9	B645800002	MCC-2 ACID CLEANER	1.00	EACH
10	0328066666	HOSE CLEAR BRAID 3/4"	50.00	FEET
11	0312121969	TUBE 1/4 BLACK	20.00	FEET
12	0101013783	ELB90 3/4 FPT X 3/4 FPT PVC	1.00	EACH
13	0101653783	ADAP 3/4 MPT X 3/4 BARB PVC	1.00	EACH
14	0421051239	SEA STRAINER-3/4 BRONZE	1.00	EACH
15	0101073783	ELB90 3/4 MPT X 3/4 BARB PVC	2.00	EACH
16	0101422583	TEE 1/2 FT X 1/2 FT X 1/2 FT P	1.00	EACH
17	0101292383	RB 1/2 MT X 1/4 FT PVC	1.00	EACH
18	0101652683	ADAP 1/2 MPT X 3/4 BARB PVC	2.00	EACH
19	0204020869	ELB90 1/4 TUBE X 1/4 MPT PLAST	1.00	EACH
20	0101652583	ADAP 1/2 MPT X 1/2 BARB PVC	1.00	EACH
21	0328065066	HOSE CLEAR BRAID 1/2"	50.00	FEET
22	0101012583	ELB90 1/2 FPT X 1/2 FPT PVC	1.00	EACH

7

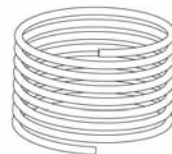


14



SEA STRAINER BRONZE

10



HOSE CLEAR BRAID 3/4" I.D.
QTY: 50 FEET (15.24 METERS)

11

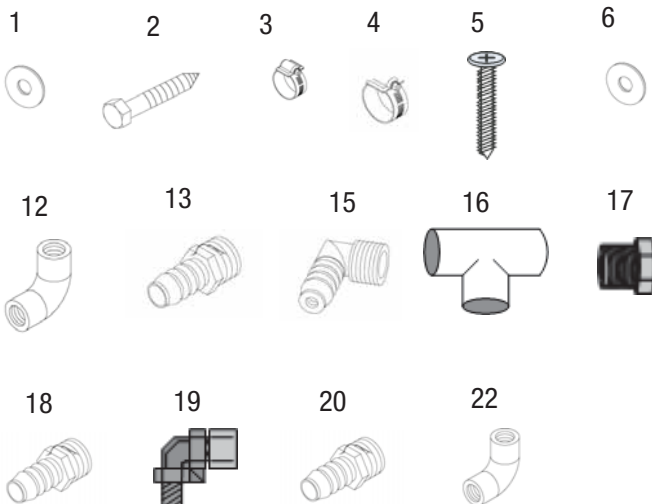


TUBE 1/4 BLACK 20 FT.

21

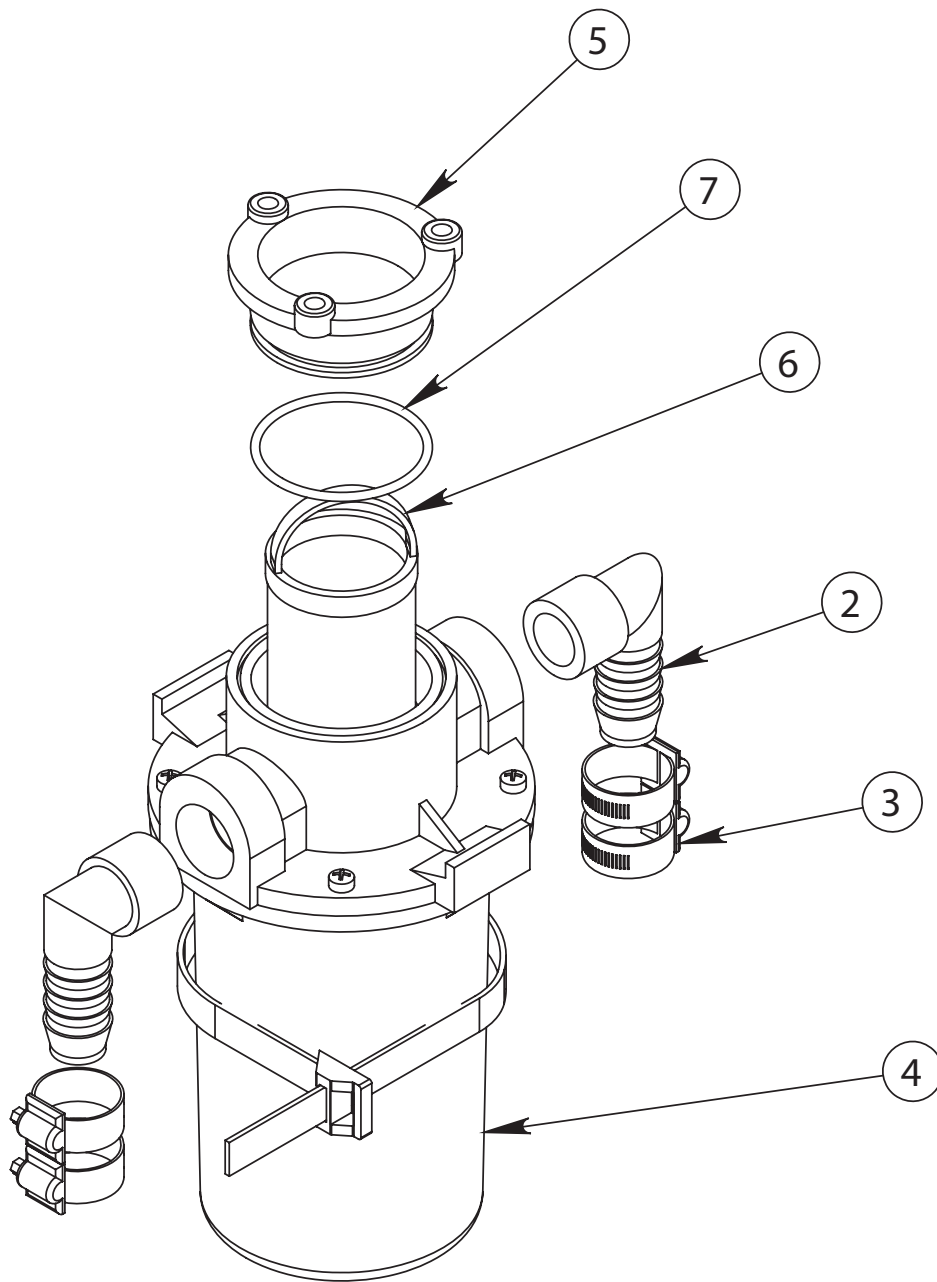


HOSE CLEAR BRAID 1/2" I.D.
QTY: 50 FEET (15.24 METERS)



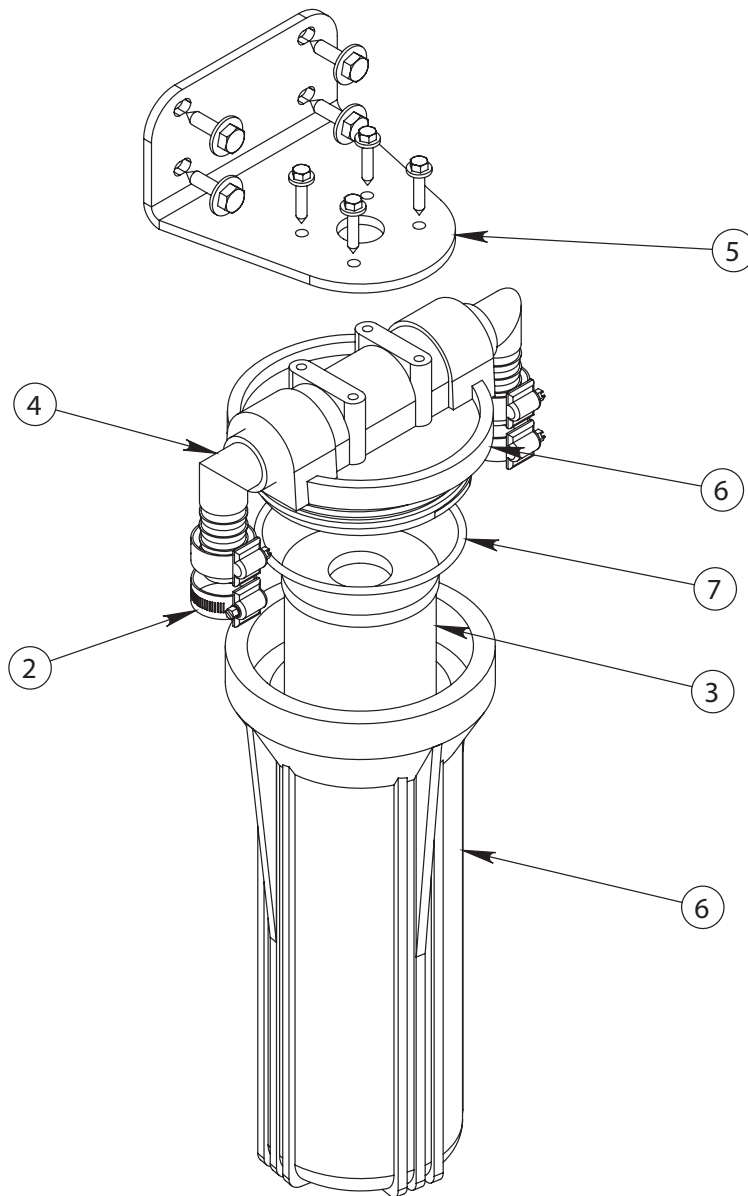
B006080002 SEA STRAINER ASSY 3/4-B

ITEM NO.	QTY.	PART NO.	DESCRIPTION
1	1	B006080002	SEA STRAINER ASSY 3/4-B (INCLUDES P/N 2-7)
2	2	0101073783	ELB90 .75 MNPT X .75 BARB PVC
3	4	05181434AA	HOSE CLAMP 3/4" SS
4	1	0421051239	SEA STRAINER-3/4 BRONZE
5	1	0421051239-1	SIGHT GLASS
6	1	0421051239-7	BASKET MONEL
7	1	0421051239-2	O-RING, LID SEA STRAINER



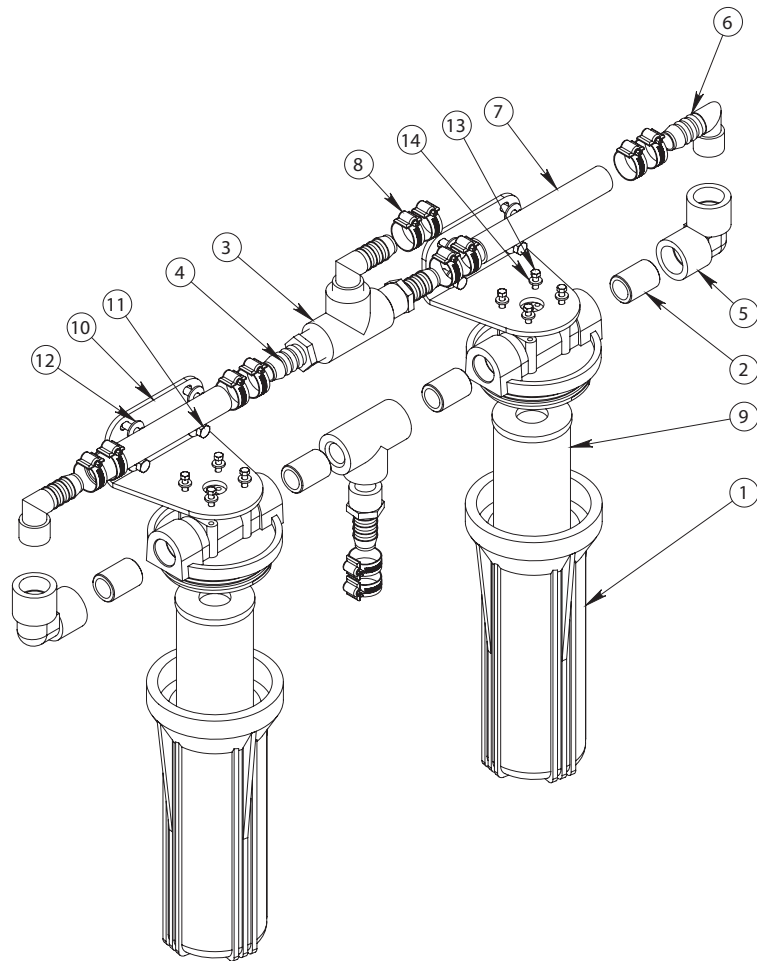
B008800001 PLANKTON FILTER ASSY-AW SINGLE

ITEM NO.	QTY.	PART NO.	DESCRIPTION
1	1	B008800001	PLANKTON FILTER ASSY-AW SINGLE (INCLUDES P/N 2-7)
2	4	05181434AA	HOSE CLAMP 3/4" SS
3	1	0805823578	ELEMENT PLANKTON
4	2	0101073783	ELB90 .75 MNPT X .75 BARB PVC
5	1	20200402102	SINGLE FILTER BRACKET
6	1	0713020473	FILTER HOUSING-LID .75 X 10 ASM
7	1	2614010473	O-RING 237 BLUE HOUSING



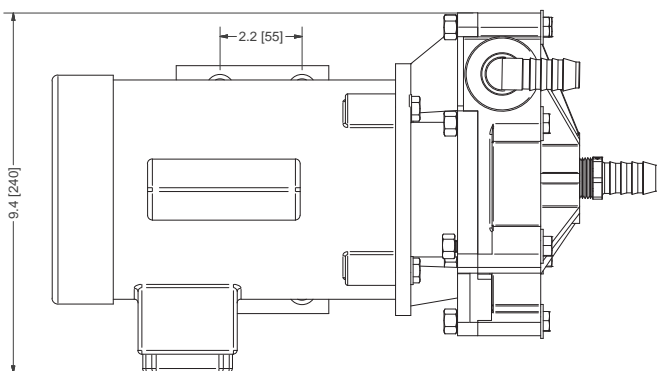
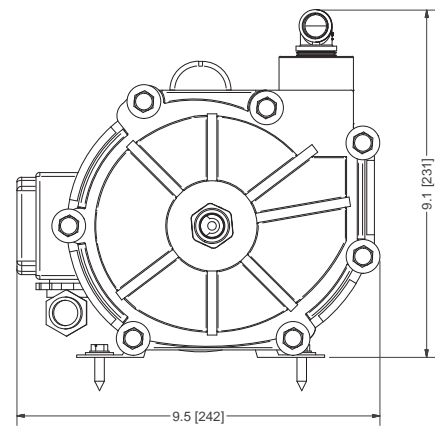
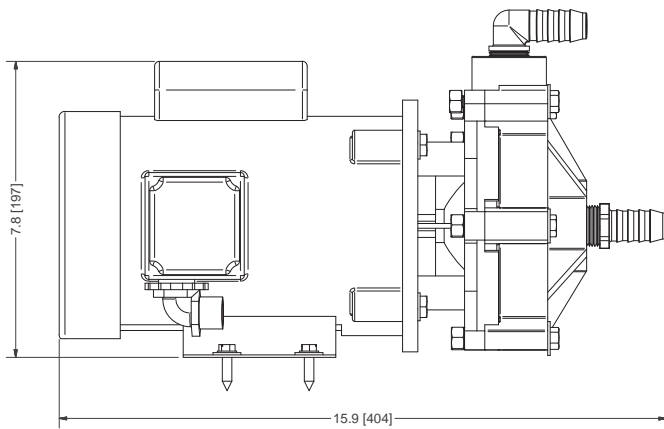
B008800002 PLANKTON FILTER ASSY-AW DOUBLE

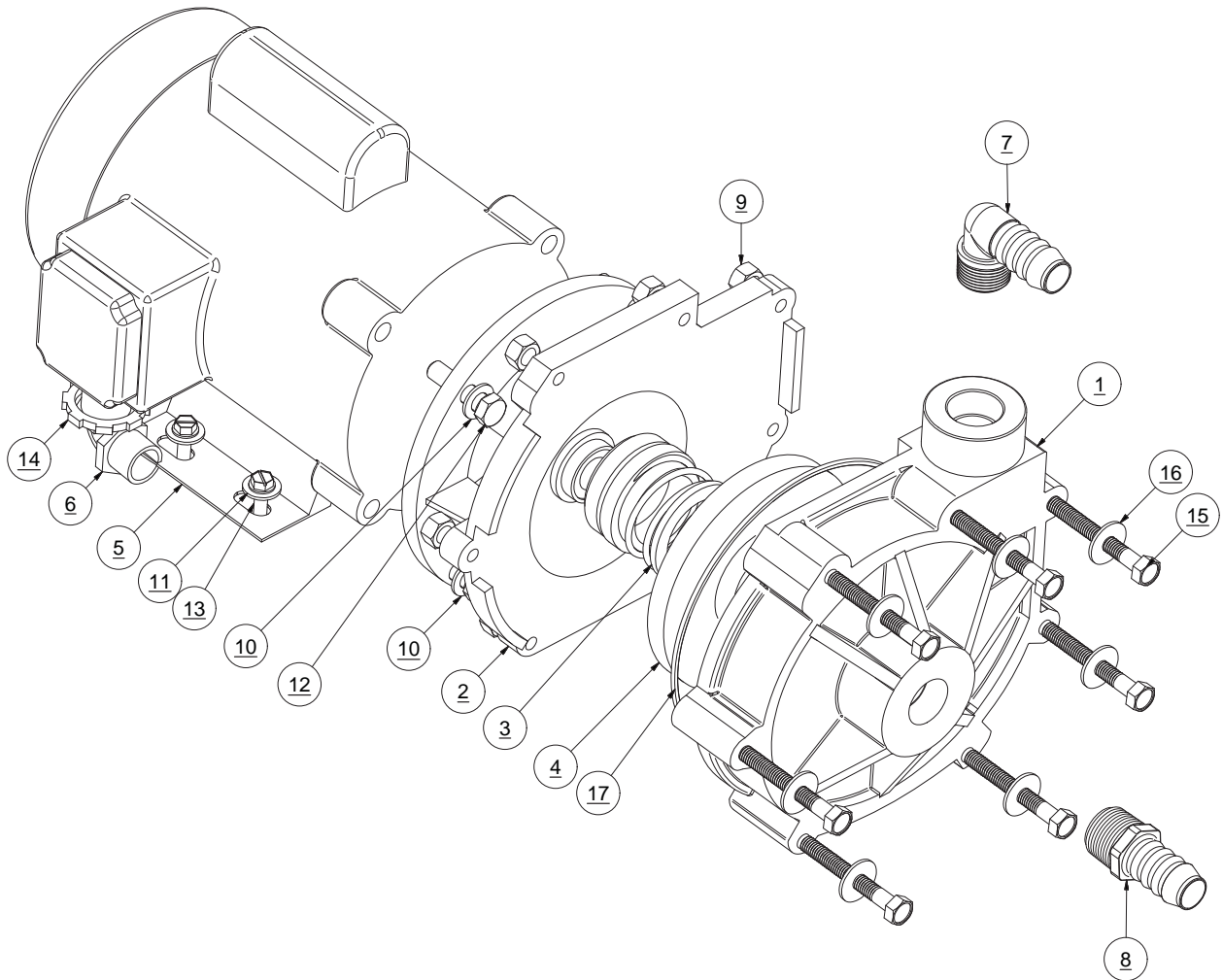
ITEM NO.	QTY.	PART NO.	DESCRIPTION
1	2	0713020473	FILTER HOUSING/LID 3/4 X 10
2	4	01013737CL	NIPPLE 3/4 NPT X CLOSE PVC "S
3	2	0101423783	TEE 3/4 FT X 3/4 FT X 3/4 FT P
4	3	0101653783	ADAP 3/4 MPT X 3/4 BARB PVC
5	2	0101013783	ELB90 3/4 FPT X 3/4 FPT PVC
6	3	0101073783	ELB90 3/4 MPT X 3/4 BARB PVC
7	2	0328066666	HOSE CLEAR BRAID 3/4"
8	12	05181434AA	HOSE CLAMP 3/4" SS
9	2	0805823578	ELEMENT PLANKTON
10	2	20200402102	SINGLE FILTER BRACKET
11	8	061172143016	SC HEX "A" 1/4 X 1 SS
12	8	061100043000	WASHER FLAT OS 1/4"SS
13	8	061170628016	SC PHIL PAN "A" 10 X 1 SS
14	8	065080028000	WASHER FLAT #10 NYLON



B016080026 BOOSTER PUMP ASSY 1PH HP75

BILL OF MATERIAL (B.O.M.)			
ITEM NO.	FILE/DWG. NAME	DESCRIPTION	QTY.
1	1221515772-1	BOOSTER PUMP VOLUTE N200	1
2	1221515772-2	MOTOR MOUNTING BRACKET	1
3	1221515772-3	SEAL BOOSTER PUMP HEAD	1
4	29121181PP	IMPELLER	1
5	1519081110	MOTOR .50 HP 110-230-50-60-1PH	1
6	1920023632	STRAIN RELIEF 90 CG90-6250	1
7	01120737DG	ELB90 0.75 MPT x BARB NYLON	1
8	0112653700	ADAP 0.75 MPT x BARB NYLON	1
9	061010057000	NUT,HEX,3/8-16,SS	7
10	061080056000	WASHER,FLAT,3/8",SS	4
11	061100043000	WASHER FLAT OS .25 SS	4
12	061142157024	SCREW,HEX HEAD,3/8-16x1-1/2",SS	4
13	061172143016	SCREX,HEX A,,25x1.00,SS	4
14	063200066000	NUT LOCK .50 STEEL	1
15	1221515772-4	SCREW HEX .312-16 x 1.5LG	7
16	1221515772-5	WASHER FLAT .312	7
17	26141260PP	GASKET BOOSTER PUMP N200	1



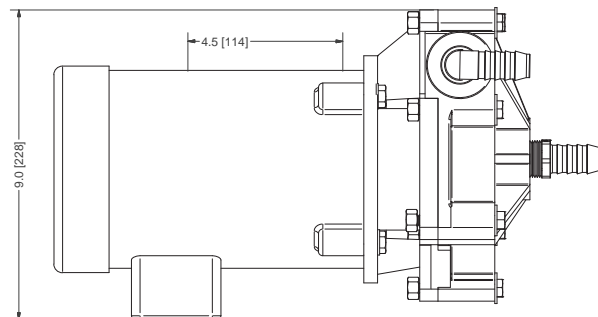
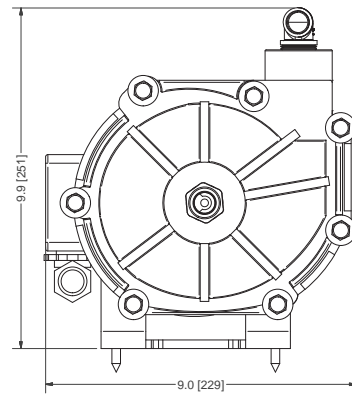
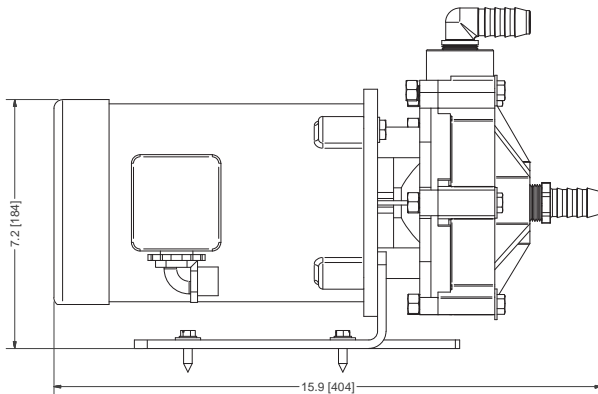


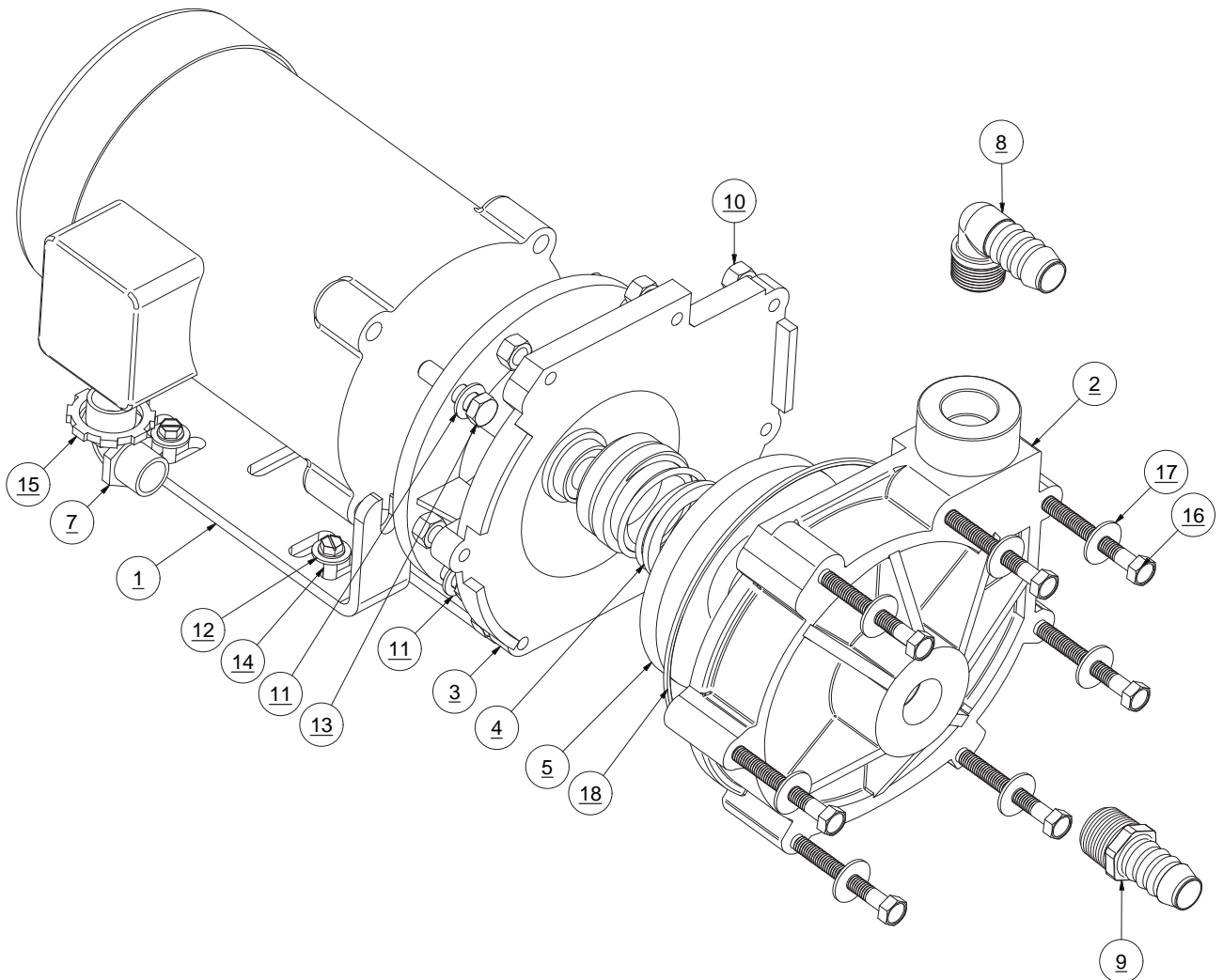
RECOMMENDED SPARES:

QTY.	PART NUMBER	DESCRIPTION
1	B655800009	SEAL KIT BOOSTER PMP N200
1	B655800012	SEAL KIT BOOSTER PMP N200/HP75
1	291211181PP	IMPELLER 4.8 N200

B016080027 BOOSTER PUMP ASSY 3PH HP75

BILL OF MATERIAL (B.O.M.)			
ITEM NO.	FILE/DWG. NAME	DESCRIPTION	QTY.
1	1221514722-3	BRACKET,MTG,PUMP,BOOSTER	1
2	1221515772-1	BOOSTER PUMP VOLUTE N200	1
3	1221515772-2	MOTOR MOUNTING BRACKET	1
4	1221515772-3	SEAL BOOSTER PUMP HEAD	1
5	29121181PP	IMPELLER	1
6	1520181110	MOTOR .50 HP 208-230-460-50-60	1
7	1920023632	STRAIN RELIEF 90 CG90-6250	1
8	01120737DG	ELB90 0.75 MPT x BARB NYLON	1
9	0112653700	ADAP 0.75 MPT x BARB NYLON	1
10	061010057000	NUT,HEX,3/8-16,SS	7
11	061080056000	WASHER,FLAT,3/8",SS	4
12	061100043000	WASHER FLAT OS .25 SS	4
13	061142157024	SCREW,HEX HEAD,3/8-16x1-1/2",SS	4
14	061172143016	SCREX,HEX A,.25x1.00,SS	4
15	063200066000	NUT LOCK .50 STEEL	1
16	1221515772-4	SCREW HEX .312-16 x 1.5LG	7
17	1221515772-5	WASHER FLAT .312	7
18	26141260PP	GASKET BOOSTER PUMP N200	1



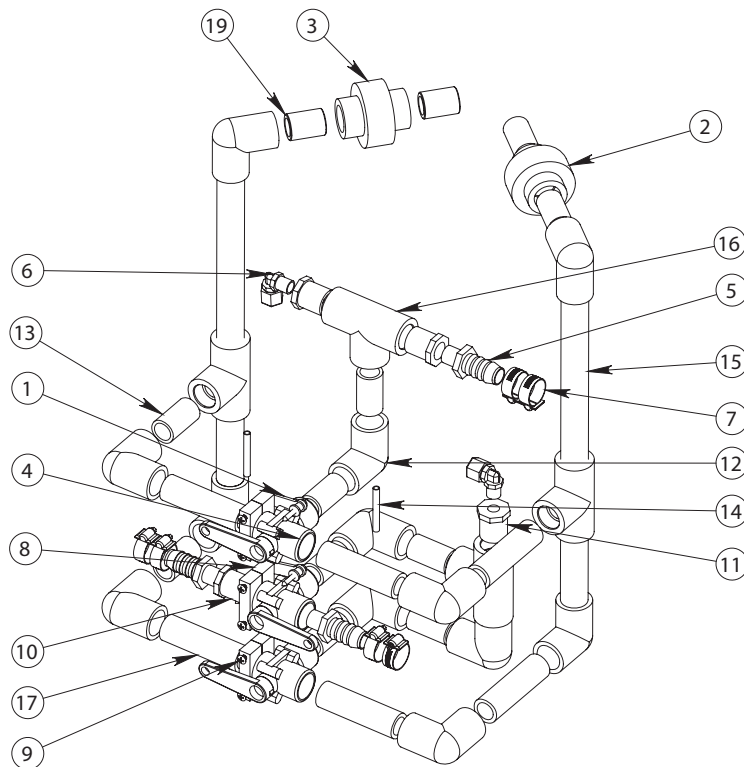


RECOMMENDED SPARES:

QTY.	PART NUMBER	DESCRIPTION
1	B655800009	SEAL KIT BOOSTER PMP N200
1	B655800012	SEAL KIT BOOSTER PMP N200/HP75
1	291211181PP	IMPELLER 4.8 N200

B075000001 MULTI MEDIA FILTER PLUMBING ASSY

ITEM NO.	QTY	PART NO.	DESCRIPTION
1	2	05180851CC	GAUGE BRACKET CBM SS
2	1	0101693783	UNION .75 SL x .75 SL PVC
3	1	0101673783	UNION .75 FNPT x .75 FNPT PVC
4	3	14011317AR	VALVE 3-WAY BALL .75 SL
5	3	0101652683	ADAP 1/2 MPT X 3/4 BARB PVC
6	2	0204020869	ELB90 1/4 TUBE X 1/4 MPT PLAST
7	6	05181434AA	HOSE CLAMP 3/4" SS
8	3	1453131700-02	VALVE BRACKET 3/4" SL, SET
9	6	061161130028	SC PHIL OVAL 10-24 X 1 1/4 SS
10	3	0101313683	RB .75 SL x .50 FNPT PVC
11	2	0101323483	RB .75 SL x .25 FNPT PVC
12	12	0101053783	ELB90 .75 SL X .75 SL PVC
13	11	0301096600	PIPE PVC SCH 80 .75 DIA x 1.75LG
14	2	0312121969	TUBE .25 BLK SEMI-RIGID NYLON
15	2	0301096600	PIPE PVC SCH 80 3/4" PER FOOT
16	4	0101463783	TEE .75 SL x .75 SL x .75 SL PVC
17	8	0301096600	PIPE PVC SCH 80 .75 DIA x 3.625LG
18	1	0328066666	HOSE CLEAR BRAID 3/4"
19	2	01013737CL	NIPPLE .75 NPT X CLOSE PVC



Exploded Parts View

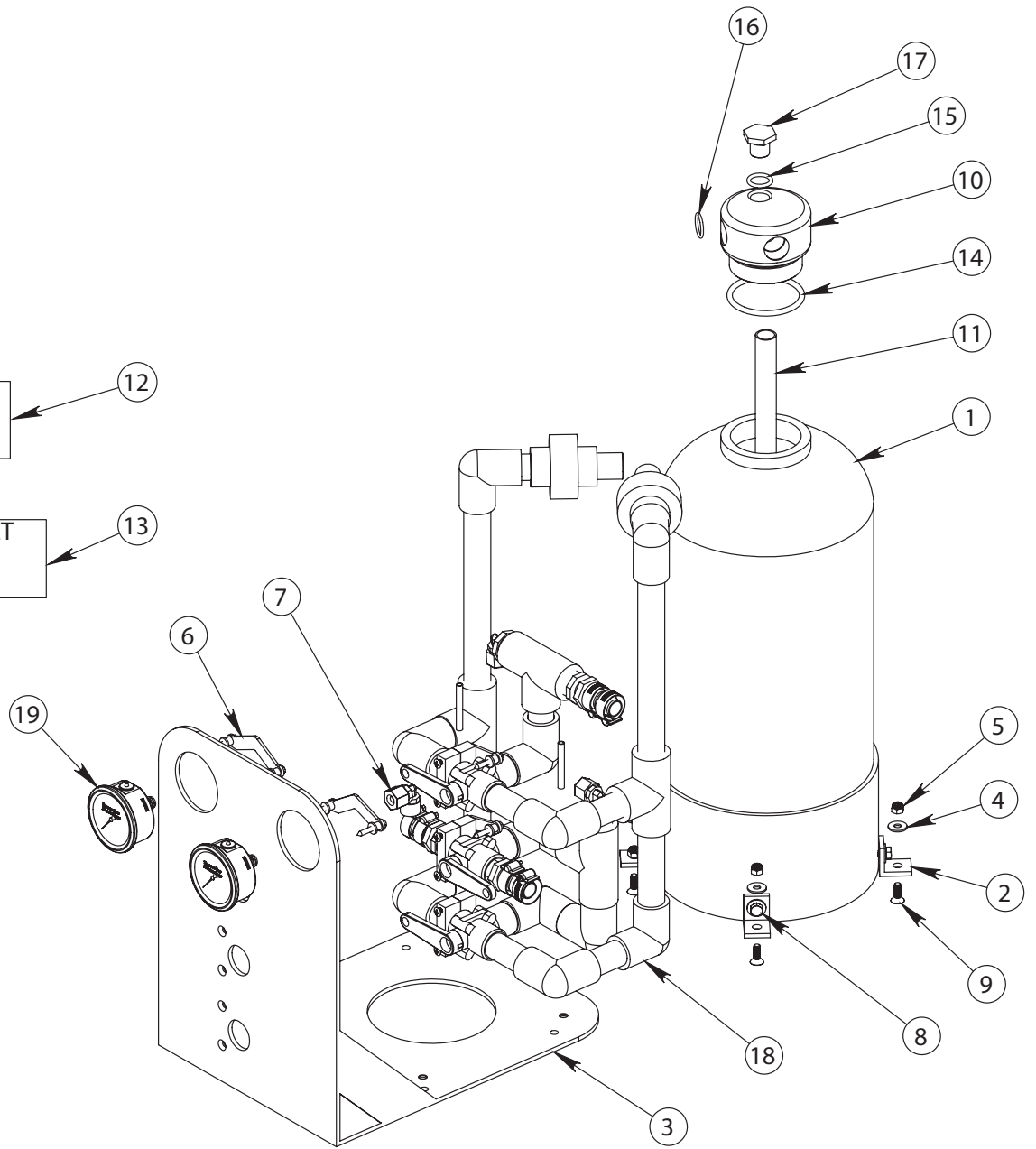
B071080002 MEDIA FILTER ASSY -4 HS/AW/UW

ITEM NO.	QTY	PART NO.	DESCRIPTION
1	1	0708040468-1	MEDIA FILTER HOUSING 818 ALMOND
2	4	20200404010	BRACKET L" MOUNTING FEET
3	1	20200325000	SKID MEDIA FILTER AS>7/97
4	16	061100043000	WASHER FLAT OS 1/4"SS
5	8	061060045000	NUT HEX 1/4-20 W/INSERT SS
6	2	05180851CC	GAUGE BRACKET CBM SS
7	2	0204010869	ELB90 1/4 TUBE X 1/4 FPT PLAST
8	4	061142145012	BOLT HEX 1/4-20 X 3/4 SS
9	4	061161845012	SC ALLEN FLAT 1/4-20 X 3/4 SS
10	1	0708040400-1	MEDIA FILTER TOP
11	1	0708040400-2	MEDIA FILTER RISER
12	25 LB.	4643020255	MEDIA SAND A1000 (100LB BAG)
13	17 LB.	4643070155	MEDIA GARNET 8-12 50# BAG
14	1	2614017300	O-RING 334 MEDIA LID 97
15	1	2614013001	O-RING 209
16	1	2614017400	O-RING 117 MEDIA TOP INLET
17	1	0708040400-3	PLUG MEDIA FILTER TOP
18	1	B075000001	MULTI MEDIA FILTER PLUMBING
19	2	10181522CC	GAUGE -30/0/70 CBM.NPT

Refer to drawing on next page.

MEDIA SAND
#A1000
25 POUNDS

MEDIA GARNET
8-12
17 POUNDS



PREFILTRATION CARTRIDGE FILTER ELEMENT WARNING:

Do not use third party Prefiltration Elements (Plankton Filter Elements, Prefilter Elements, Commercial Prefilter Elements, or Oil/Water Separator Elements). Use only Sea Recovery supplied Prefiltration Elements. Third party prefiltration elements on the market do not properly fit into the Sea Recovery Filter Housings, the seams fall apart, and they will allow by-pass resulting in EXTENSIVE AND EXPENSIVE DAMAGE TO THE HIGH PRESSURE PUMP AS WELL AS PREMATURE FOULING OF THE R.O. MEMBRANE ELEMENT.

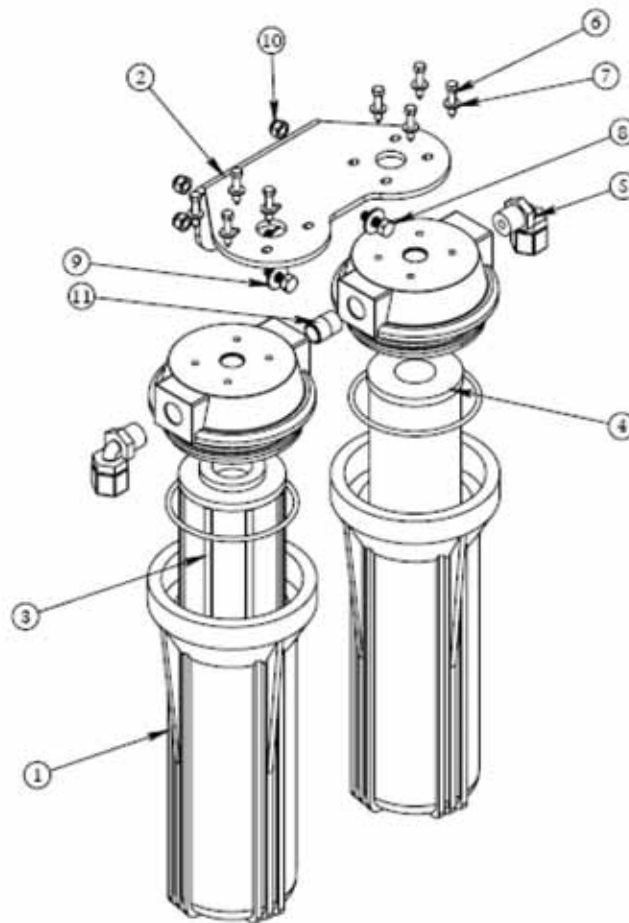
Damage caused to the Sea Recovery High Pressure Pump, R.O. Membrane Element, or any other component from the use of third party, non Sea Recovery supplied, filter elements is the responsibility and liability of the operator and is not covered by the Sea Recovery Warranty.

FILTER ELEMENT CAUTION:

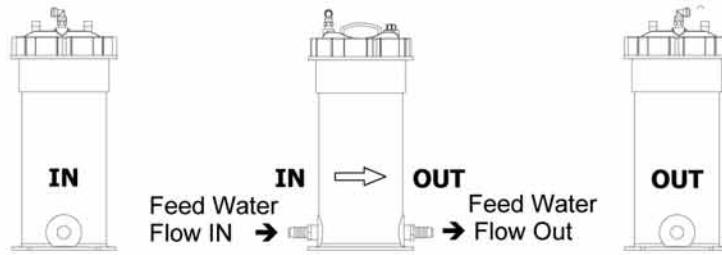
Do not use "string wound" or "fiber" type prefilter elements. These type of elements are designed for the Photographic Film Developing industry. When used in sea water they will plug up rapidly in 1/10th or less the time causing frequent shut down of the system and very frequent changing resulting in very high cost of maintenance.

B108140001 - PRE FILTER-DUAL ASSY

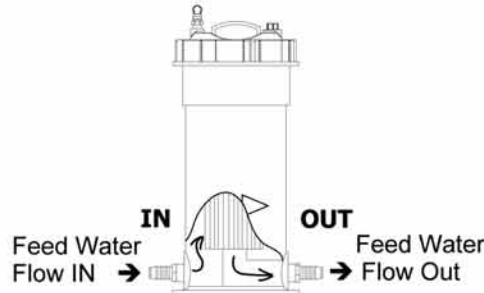
ITEM NO.	PART NUMBER	DESCRIPTION	QTY.
1	0713020873	FILTER HOUSING/LID 1/2" X 20	2
2	20200402101	DUAL BRACKET, PRE-FILTER, CHRCL/PLNKTN	1
3	0801130257	ELEMENT PREFILTER 10-25	1
4	0801060157	ELEMENT PREFILTER 10-05	1
5	0112072600	ELBOW .50 MPT X 3/4 BARB NYLON	2
6	061170628016	SC PHIL PAN "A" 10 X 1 SS	8
7	061080028000	WASHER FLAT #10 SS	8
8	061142145012	BOLT HEX 1/4-20 X 3/4 SS	4
9	061100043000	WASHER FLAT OS 1/4"SS	4
10	061060045000	NUT HEX 1/4-20 W/INSERT SS	4
11	01013725CL	NIPPLE 1/2 NPT X CLOSE PVC	1



COMMERCIAL PREFILTER CONNECTION AND WATER FLOW

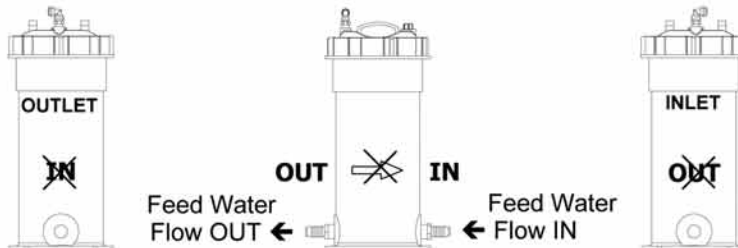


Commercial Prefilter is plumbed as per the raised arrows and markings IN and OUT

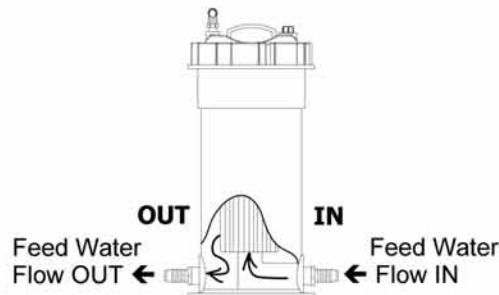


Feed Water Flow through the Commercial Prefilter Element is from the OUTSIDE of the Element to the INSIDE CENTER of the Element

OIL/WATER SEPARATOR CONNECTION AND WATER FLOW



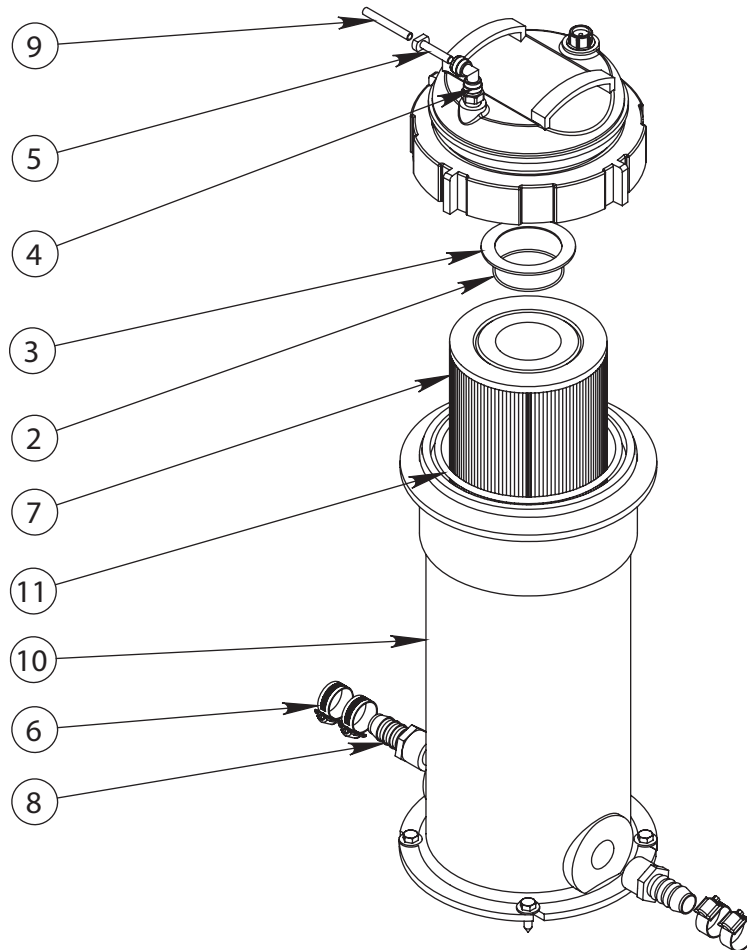
Oil/Water Separator utilizes the same housing as the Commercial Prefilter, however it is plumbed OPPOSITE of the Commercial Prefilter and OPPOSITE of the raised arrows and markings IN and OUT Separate Labels are placed on the Oil/Water Separator indicating correct INLET and OUTLET



Feed Water Flow through the Oil/Water Separator Element is from the INSIDE CENTER of the Element to the OUTSIDE of the element

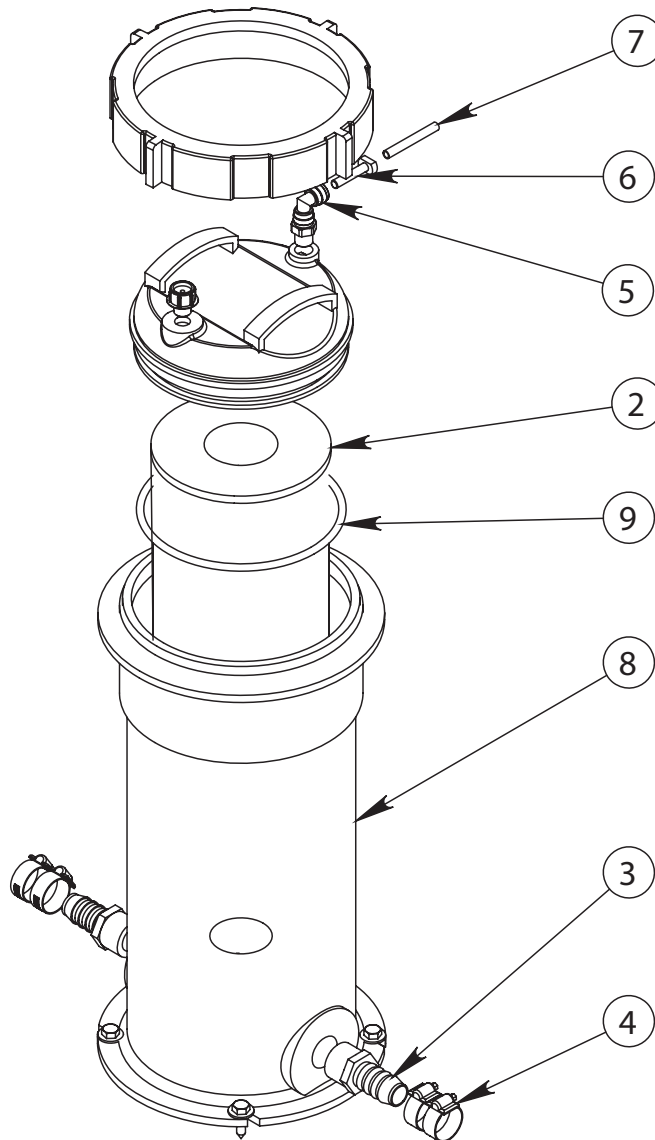
B109120001 COMMERCIAL PREFILTER ASSY 32.5 SQ FT SRC AQM

ITEM NO.	QTY	PART NO.	DESCRIPTION
1	1	B109120001	COMMERCIAL PREFILTER ASSY 32.5 SQ FT (INCLUDES P/N 2-11)
2	2	2614018969	O-RING 034 FOR COMMERCIAL FILTER
3	2	3901040100	ADAPTER SPACER RING
4	1	0204020100	ELB90 .25 TUBE JQ x .25MNPT
5	1	0204990300	PLUG 1/4 JQ
6	4	05181434AA	HOSE CLAMP 3/4" SS </td
7	1	0801063357	ELEMENT CPFE 5 MIC 32.5 SQFT
8	2	0101653783	ADAP 3/4 MPT X 3/4 BARB PVC
9	15 FT.	0312121969	TUBE .25 BLK SEMI-RIGID NYLON
10	1	07620310WA	FILTER HOUSING 32.5SQFT >10/01
11	1	07620310WA-06	O-RING LID CPF/OWS 32.5SQFT



B111120001 OIL/WATER SEPARATOR ASSY SRC 32.5 SQ FT

ITEM NO.	QTY	PART NO.	DESCRIPTION
1	1	B111120001	OIL / WATER SEPARATOR ASSY SRC 32.5 SQ FT (INCLUDES P/N 2-9)
2	1	08020723KD	ELEMENT OWSE 32.5 SQFT
3	2	0101653783	ADAP 3/4 MPT X 3/4 BARB PVC
4	3	05181434AA	HOSE CLAMP 3/4" SS
5	1	0204020100	ELB90 .25 TUBE JQ x .25MNPT
6	1	0204990300	PLUG 1/4 JQ
7	1	0312121969	TUBE .25 BLK SEMI-RIGID NYLON
8	1	07620310WA	FILTER HOUSING 32.5SQFT >10/01
9	1	07620310WA-06	O-RING LID CPF/OWS 32.5SQFT



HIGH PRESSURE PUMP WARNING:

Two similar pumps are commercially available. One has a lower water flow rate, the other has a higher water flow rate than the Sea Recovery High Pressure Pump.

The commercially available lower water flow rated pump will cause:

- a. Poor quality Product Water.
- b. Low Product Water Flow.
- b. Excessive operating pressure as the System attempts to adjust pressure to achieve rated Product Water Flow.
- c. Immediate fouling of the Sea Recovery Aqua Whisper R.O. Membrane Elements resulting in unrecoverable damage to them.

The commercially available higher water flow rated pump will cause:

- a. Low feed water pressure into the high pressure pump.
- b. Line pressure loss of feed water resulting in continual system shut down.
- c. Cavitation to the high pressure pump resulting in premature failure of the pump.
- d. Extensive Line Pressure Build-Up in the High Pressure Hoses and Manifolds.
- d. Telescoping damage of the R.O. Membrane Elements due to excessive feed flow across them.
- e. Over heating of the High Pressure Pump Electric Motor due to excessive load.

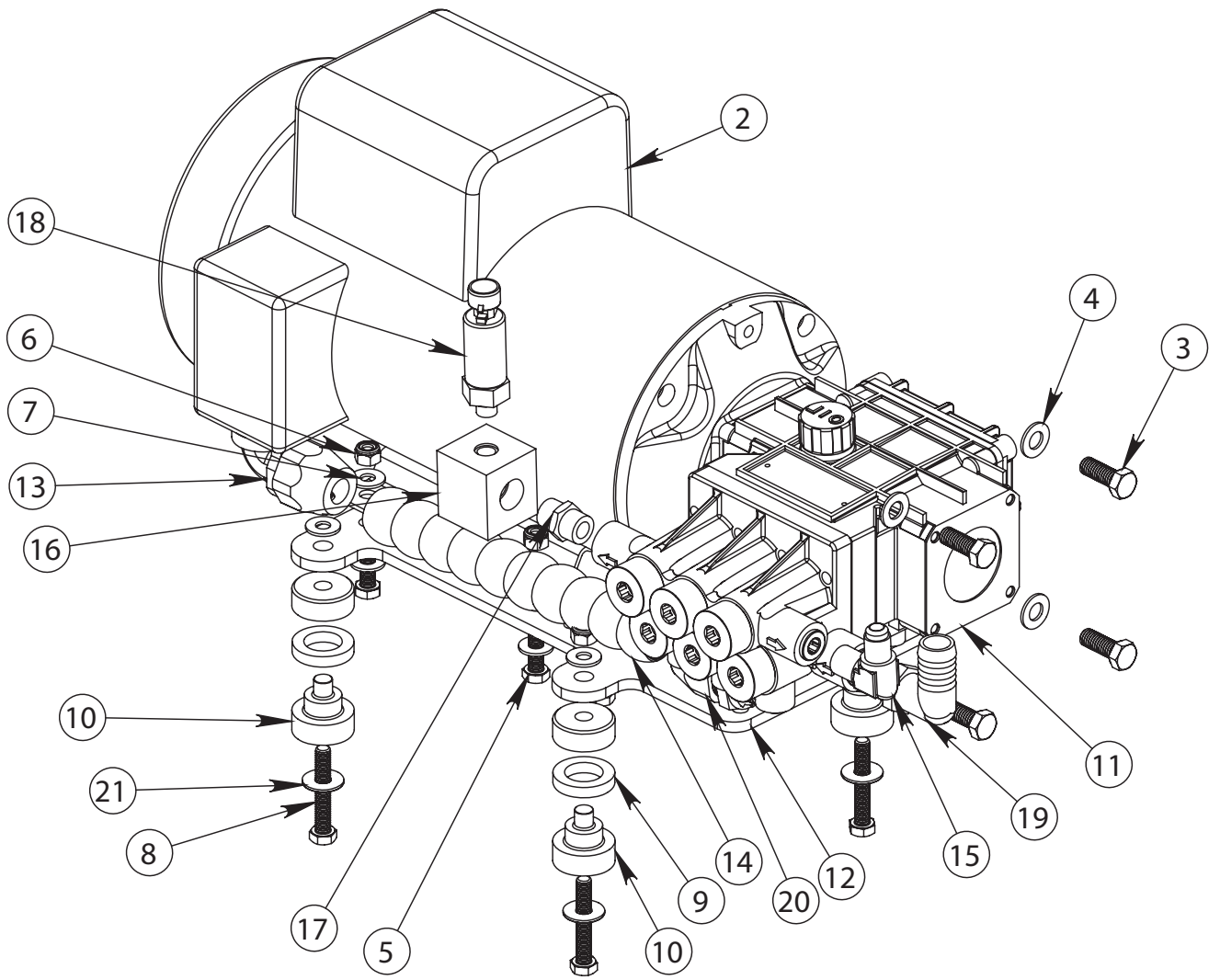
NEVER REPLACE THE SEA RECOVERY HIGH PRESSURE PUMP WITH A THIRD PARTY, NON SEA RECOVERY SUPPLIED, HIGH PRESSURE PUMP. THE SEA RECOVERY AQUA WHISPER HIGH PRESSURE PUMP IS NOT AVAILABLE THROUGH ANY SOURCE OTHER THAN SEA RECOVERY and SEA RECOVERY DEALERS. WHEN REPAIRING OR REPLACING THE HIGH PRESSURE PUMP ENSURE THAT THE MARINE DEALER HAS OBTAINED THE REPAIR PARTS OR THE PUMP FROM SEA RECOVERY.

DAMAGE CAUSED TO THE SEA RECOVERY SYSTEM RESULTING FROM THE USE OF NON SUPPLIED SEA RECOVERY PARTS OR COMPONENTS IS THE RESPONSIBILITY AND LIABILITY OF THE MARINE DEALER THAT SUPPLIED THE PUMP OR PARTS AND THE OPERATOR AND IS NOT COVERED BY THE SEA RECOVERY WARRANTY.

B156140003 HP PUMP/MOTOR ASSY AQMCII PLGR 110/220/5/6/1PH (Standard)

ITEM NO.	QTY	PART NO.	DESCRIPTION
1	1	B156140003	HP PUMP MOTOR ASSY AQMC II PLGR 110/220/5/6/1PH (INCLUDES P/N 2-21)
2	1	15AC062412	MOTOR 2.5 HP 50/60 110/220
3	4	061142157016	BOLT HEX 3/8-16 X 1 SS
4	4	061080056000	WASHER FLAT 3/8" SS
5	4	061142150016	BOLT HEX 5/16-18 X 1.0LG SS
6	8	061060050000	HEX NUT 5/16-18 W/INSERT SS
7	12	061100049000	WASHER FLAT OS 5/16" SS
8	4	061142150032	BOLT HEX 5/16-18 X 2" SS
9	4	2020043902	SPACER MOTOR MOUNT AQMCII
10	4	2115031700	RUBBER MOUNT 90LB AQM
11	1	12180512CO	HP PUMP-GP 4.2 GPM SS LEFTHAND
12	1	20200239002	PLATE, GP MOTOR MOUNT PLATE AQWC II
13	1	1920016590	STRAIN RELIEF 90, .50 BLK W-NUT
14	1	4928402800	CONDUIT .50 FLEX BLK
15	1	1317021969	ELB90 -6 FLARE X 3/8 MPT SS
16	1	5353140903	MANIFOLD HP TRANSDUCER AQMW
17	1	01173818CL	NIPPLE HEX .375 NPT X CLOSE SS
18	1	2317100300	TRANSDUCER 0-2000 PSI 7/16" SAE
19	1	0112072600	ELB90 1/2 MPT X 3/4 BARB NYLON
20	1	1904040600	STRAIN RELIEF 1/2" BLK LT50P
21	4	061110049000	WASHER FENDER .312 SS

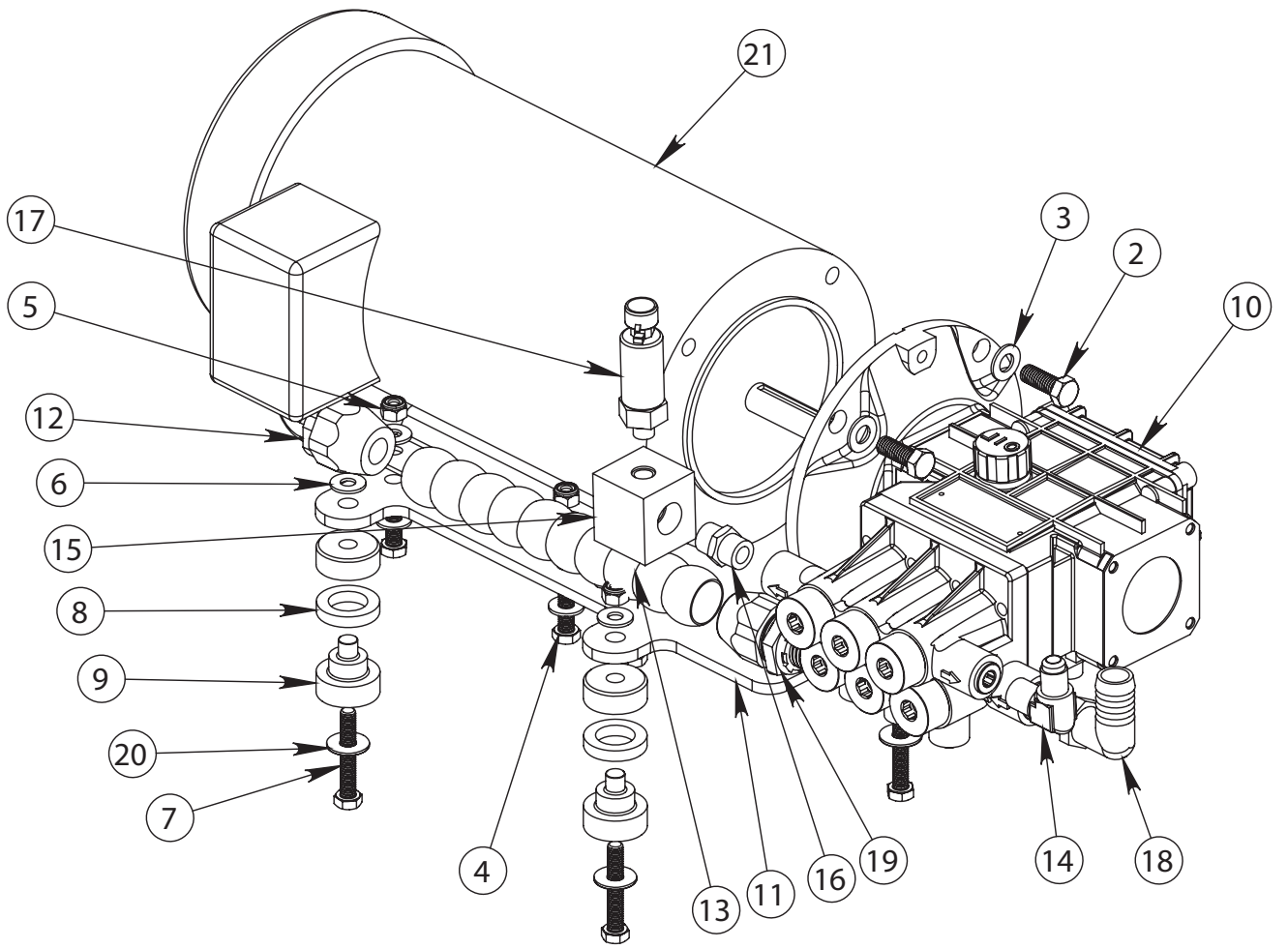
Refer to drawing on next page.



B156140004 HP PUMP/MOTOR ASSY AQMCII PLGR 220/440/60/3PH

ITEM NO.	QTY	PART NO.	DESCRIPTION
1	1	B156140004	HP PUMP MOTOR ASSY AQMC II PLGR 220/440/60/3PH (INCLUDES P/N 2-21)
2	4	061142157016	BOLT HEX 3/8-16 X 1 SS
3	4	061080056000	WASHER FLAT 3/8" SS
4	4	061142150016	BOLT HEX 5/16-18 X 1.0LG SS
5	8	061060050000	HEX NUT 5/16-18 W/INSERT SS
6	12	061100049000	WASHER FLAT OS 5/16" SS
7	4	061142150032	BOLT HEX 5/16-18 X 2" SS
8	4	2020043902	SPACER MOTOR MOUNT AQMCII
9	4	2115031700	RUBBER MOUNT 90LB AQM
10	1	12180512CO	HP PUMP-GP 4.2 GPM SS LEFTHAND
11	1	20200239002	PLATE, GP MOTOR MOUNT PLATE AQWC II
12	1	1920016590	STRAIN RELIEF 90, .50 BLK W-NUT
13	1	4928402800	CONDUIT .50 FLEX BLK
14	1	1317021969	ELB90 -6 FLARE X 3/8 MPT SS
15	1	5353140903	MANIFOLD HP TRANSDUCER AQMW
16	1	01173818CL	NIPPLE HEX .375 NPT X CLOSE SS
17	1	2317100300	TRANSDUCER 0-2000 PSI 7/16" SAE
18	1	0112072600	ELB90 1/2 MPT X 3/4 BARB NYLON
19	1	1904040600	STRAIN RELIEF 1/2" BLK LT50P
20	4	061110049000	WASHER FENDER .312 SS
21	1	82012005	MTR 2.4 HP 220-440/50-60 3PH

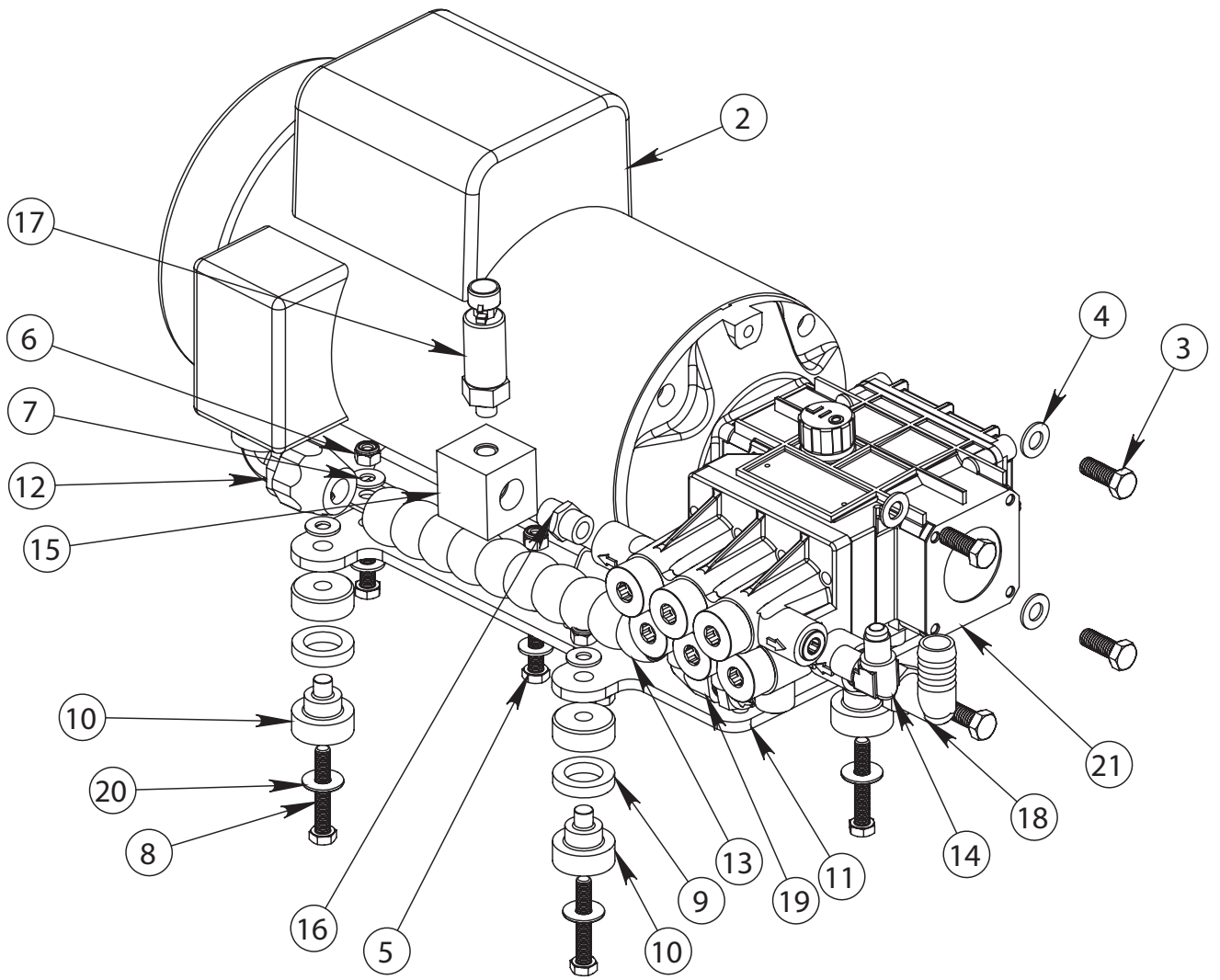
Refer to drawing on next page.



B156140006 HP PUMP/MOTOR PLGR AQMCII 110/220/6/1 SMALL 60 HZ

ITEM NO.	QTY	PART NO.	DESCRIPTION
1	1	B156140003	HP PUMP MOTOR PLGR AQMC II 110/220/6/1SMALL 60 HZ (INCLUDES P/N 2-21)
2	1	15AD062412	MOTOR 2.1 HP 50/60 110/220
3	4	061142157016	BOLT HEX 3/8-16 X 1 SS
4	4	061080056000	WASHER FLAT 3/8" SS
5	4	061080056000	BOLT HEX 5/16-18 X 1.0LG SS
6	8	061060050000	HEX NUT 5/16-18 W/INSERT SS
7	12	061100049000	WASHER FLAT OS 5/16" SS
8	4	061142150032	BOLT HEX 5/16-18 X 2" SS
9	4	2020043902	SPACER MOTOR MOUNT AQMCII
10	4	2115031700	RUBBER MOUNT 90LB AQM
11	1	20200239002	PLATE, GP MOTOR MOUNT PLATE AQWC II
12	1	1920016590	STRAIN RELIEF 90, .50 BLK W-NUT
13	1	4928402800	CONDUIT .50 FLEX BLK
14	1	1317021969	ELB90 -6 FLARE X 3/8 MPT SS
15	1	5353140903	MANIFOLD HP TRANSDUCER AQMW
16	1	01173818CL	NIPPLE HEX .375 NPT X CLOSE SS
17	1	2317100300	TRANSDUCER 0-2000 PSI 7/16" SAE
18	1	0112072600	ELB90 1/2 MPT X 3/4 BARB NYLON
19	1	1904040600	STRAIN RELIEF 1/2" BLK LT50P
20	4	061110049000	WASHER FENDER .312 SS
21	1	12180511CO	HP PUMP-GP 3.0 GPM LEFTHAND

Refer to drawing on next page.



12180513CO - HP PUMP ASSY (Standard)

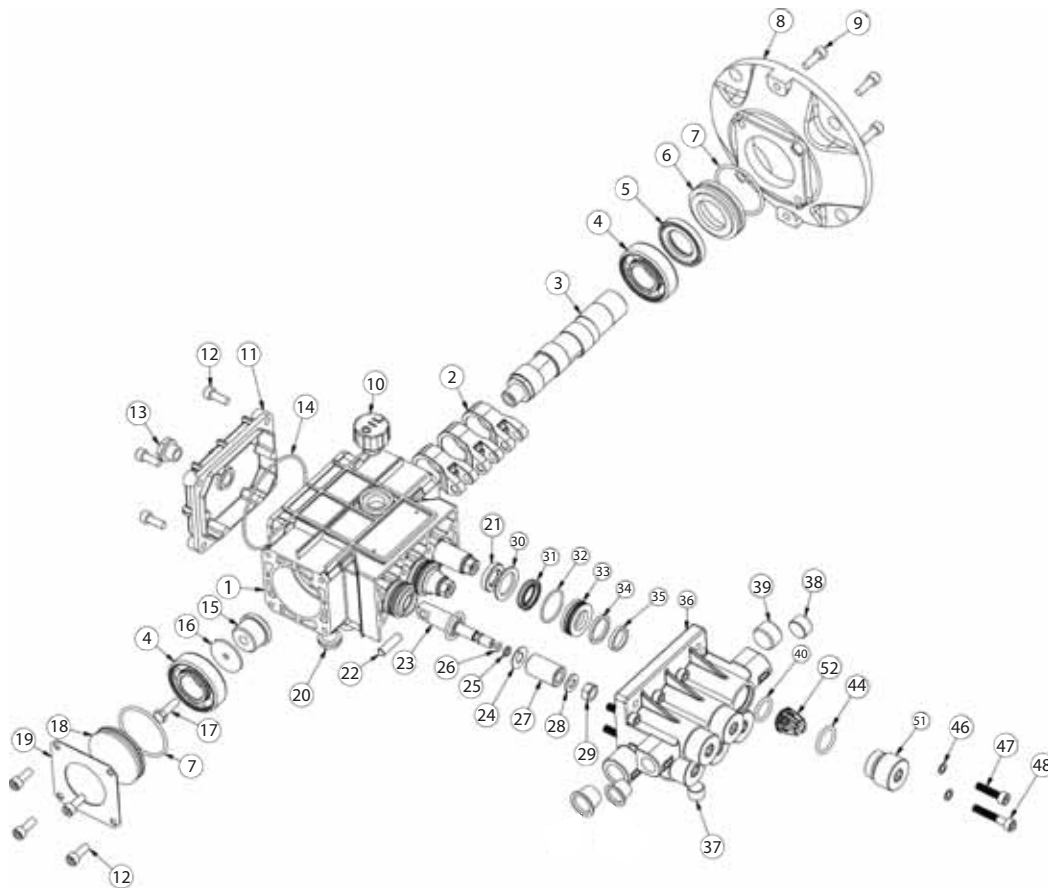
ITEM NO.	PART NUMBER	DESCRIPTION	QTY
1-52	12180511CO	Pump HP 3.0 GPM SS Left (complete high pressure pump)	1
	12180512CO	Pump HP 4.2 GPM SS Left (complete high pressure pump)	
1-29	12180511CO-CCAL	Crank Case Stuffed HP 3.0 GPM SS Left	1
	12180512CO-CCAL	Crank Case Stuffed HP 4.2 GPM SS Left	
30-52	12180511CO-WE	Manifold Stuffed HP 3.0 GPM SS	1
	12180512CO-WE	Manifold Stuffed HP 4.2 GPM SS	
1	12180510CO-01	Crankcase	1
2	12180510CO-02	Connecting Rod	3
3	12180511CO-03	Crankshaft 5/8" Hollow 3.0 GPM	1
	12180512CO-03	Crankshaft 5/8" Hollow 4.2 GPM	
4	12180510CO-04	Bearing	2
5	12180510CO-05	Oil Seal, Crankshaft	1
6	12180510CO-06	Retainer, Oil Seal	1
7	12180510CO-07	O-ring, Oil Seal Retainer/Side Cover	2
8	12180510CO-08	Flange, NEMA 56C Face	1
9	12180510CO-09	Screw SHCS 18mm Long	4
10	12180510CO-10	Oil Cap Vented	1
11	12180510CO-11	Rear Cover	1
12	12180510CO-12	Screw SHCS 16mm Long	8
13	12180510CO-13	Sight Glass	1
14	12180510CO-14	O-ring, Rear Cover	1
15	12180510CO-15	Bushing	1
16	12180510CO-16	Washer	1
17	12180510CO-17	Screw HHCS 20mm long	1
18	12180510CO-18	Side Cover	1
19	12180510CO-19	Side Plate	1
20	12180510CO-20	Oil Drain Plug	1
21	12180510CO-21	Oil Seal Plunger	3
22	12180510CO-22	Wrist Pin	3
23	12180510CO-23	Plunger Rod	3
24	12180510CO-24	Slinger	3
25	12180510CO-25	Anti-Extrusion Ring	3
26	12180510CO-26	O-ring Plunger	3
27	12180510CO-27	Plunger 18mm	3
28	12180510CO-28	Washer, Plunger Rod	3
29	12180510CO-29	Nut, Plunger Rod	3
30	12180510CO-30	Seal Retainer	3
31	12180510CO-31	Low Pressure Seal	3
32	12180510CO-32	O-ring Seal Case	3
33	12180510CO-33	Seal case	3
34	12180510CO-34	Square Ring, High Pressure Seal	3
35	12180510CO-35	Glide Ring, High Pressure Seal	3
36	12180510CO-36	Manifold	1
37	12180510CO-37	1/4 NPT Plug	3
38	12180510CO-38	3/8 NPT Plug	1
39	12180510CO-39	1/2 NPT Plug	1
40	12180510CO-40	O-ring Valve Spacer	6

HP Pump Assy - Cont.

ITEM NO.	PART NUMBER	DESCRIPTION	QTY
44	12180510CO-44	O-ring Valve Plug	6
46	12180510CO-46	Washer, Ribbed Lock	8
47	12180510CO-47	Screw SHCSM5 x 25mm Long	4
48	12180510CO-48	Screw SHCSM5 x 35mm Long	4
51	12180513CO-51	Valve Cap	6
52	12180510CO-52	Valve Assembly 2.3 through 4.2 GPM	6
	B647800003	Pump Oil 16oz	

REPAIR KITS:

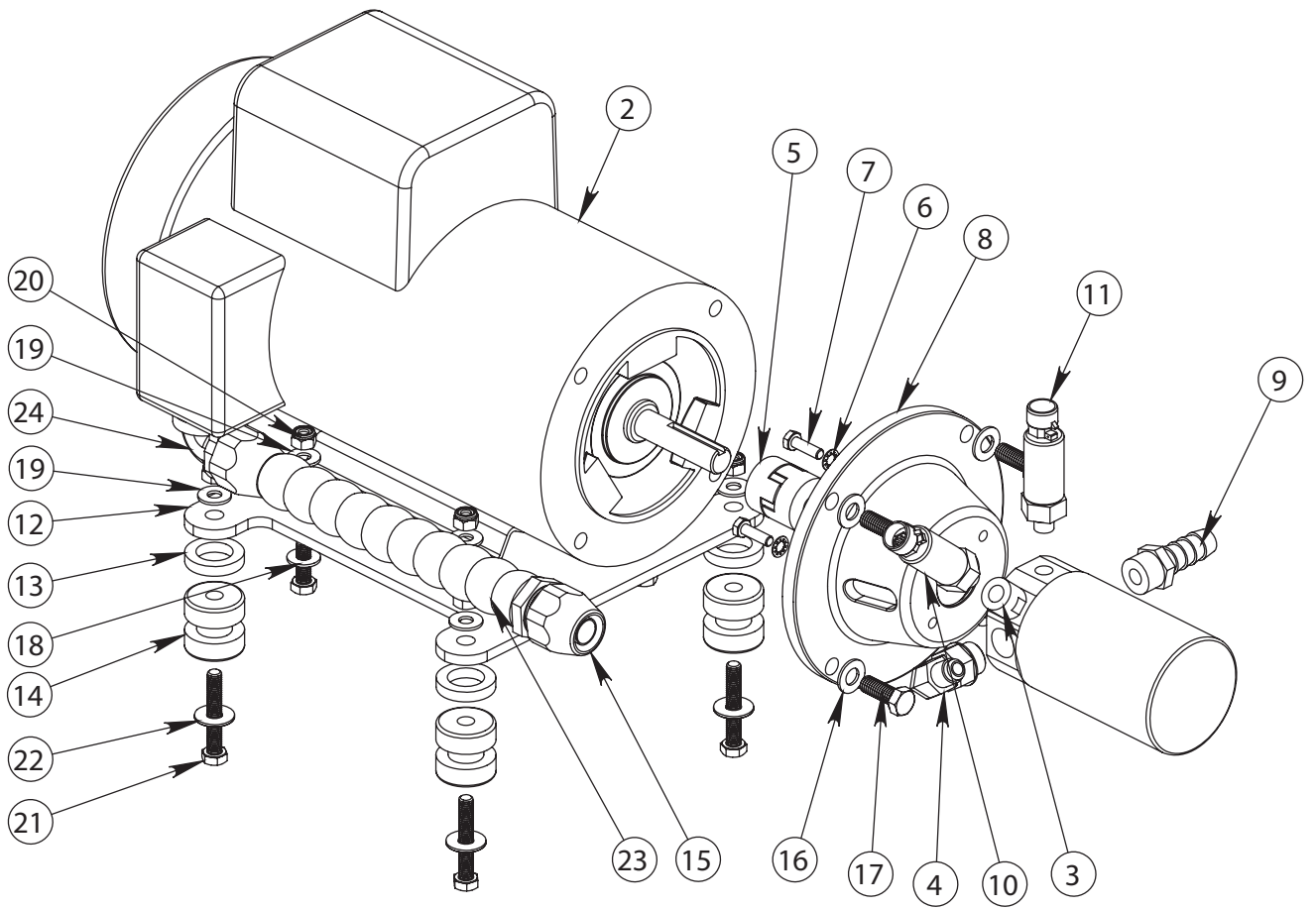
PART NUMBER	MODEL NUMBER	ITEMS IN KIT	PER KIT
B653090001	SRC HPP Seal Kit	25, 26, 30, 31, 32, 33, 34 & 35	3
B654080002	SRC HPP Valve Kit	40, 44 & 52	6
B652090002	SRC HPP Pump Kit	25, 26, 30, 31, 32, 33, 34, 35, 40, 44 & 52	6



B156140001 HP PUMP / MOTOR ASSY AQMCII APP- Optional

ITEM NO.	QTY.	PART NO.	DESCRIPTION
1	1	B156140001	HP PUMP MOTOR ASSY 1 PHASE (INCLUDES P/N 2-24)
2	1	15AE261912	MOTOR 3/2.5 HP 115/230 1PH
3	1	12572405DS	HPRA PUMP 4.37 GPM (CP)
4	1	1317021869	ELB90 -6 FLARE X 3/4 UNF SS
5	1	12207602RW	COUPLER TX1 AQM2
6	2	061120091000	WASHER SPLIT LOCK M6 SS
7	2	061142191174	HEX BOLT M6 X 20MM SS
8	1	1220770101	BELL HOUSING AQ/AW 1PH
9	1	01126526DG	ADAP 1/2 MPT X 3/4 BARB NYLON
10	1	2317100300	TRANSDUCER 0-2000 PSI 7/16" SAE
11	1	2317100200	TRANSDUCER 0-200 PSI 7/16" SAE
12	1	20200239000	PLATE MOTOR MOUNT AQMCII
13	4	2020043902	SPACER MOTOR MOUNT AQMCII
14	4	2115031700	RUBBER MOUNT 90 LB AQM
15	1	1904040600	STRAIN RELIEF 1/2" BLK LT50P
16	4	061080056000	WASHER FLAT 3/8" SS
17	4	061142157016	BOLT HEX 3/8-16 X 1 SS
18	4	061142150016	BOLT HEX 5/16-18 X 1.0LG SS
19	12	061100049000	WASHER FLAT OS 5/16" SS
20	8	061060050000	HEX NUT 5/16-18 W/INSERT SS
21	4	061142150032	BOLT HEX 5/16-18 X 2" SS
22	4	061110049000	WASHER FENDER .312 SS
23	1	4928402800	CONDUIT .50 FLEX BLK
24	1	1920016590	STRAIN RELIEF 90, .50 BLK W-NUT

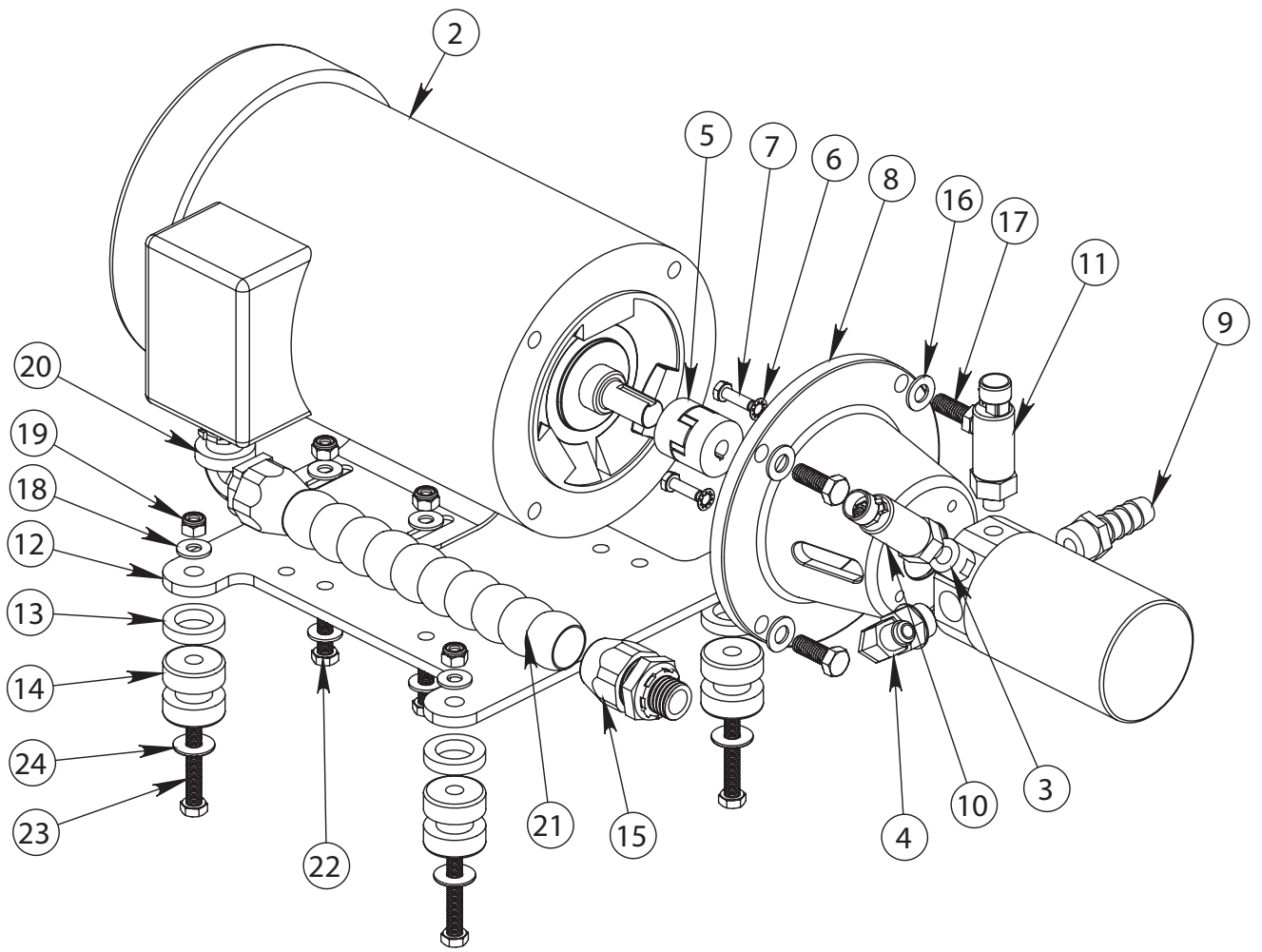
Refer to drawing on next page.



B156140002 HP PUMP / MOTOR ASSY AQMCII APP 3PH- Optional

ITEM NO.	QTY.	PART NO.	DESCRIPTION
1	1	B156140002	HP PUMP / MOTOR ASSY AQMC II 3PH (INCLUDES P/N 2-24)
2	1	15AF271910	MOTOR 3/2.5 HP 3 PH AQM 50/6
3	1	12572405DS	HPRA PUMP 4.37 GPM (CP)
4	1	1317021869	ELB90 -6 FLARE X 3/4 UNF SS
5	1	12207602RW	COUPLER TX1 AQM2
6	2	061120091000	WASHER SPLIT LOCK M6 SS
7	2	061142191174	HEX BOLT M6 X 20MM SS
8	1	1220770103	BELL HOUSING AQ/AW 3PH
9	1	01126526DG	ADAP 1/2 MPT X 3/4 BARB NYLON
10	1	2317100300	TRANSDUCER 0-2000 PSI 7/16" SAE
11	1	2317100200	TRANSDUCER 0-200 PSI 7/16" SAE
12	1	20200239000	PLATE MOTOR MOUNT AQMCII
13	4	2020043902	SPACER MOTOR MOUNT AQMCII
14	4	2115031700	RUBBER MOUNT 90 LB AQM
15	1	1904040600	STRAIN RELIEF 1/2" BLK LT50P
16	4	061080056000	WASHER FLAT 3/8" SS
17	4	061142157016	BOLT HEX 3/8-16 X 1 SS
18	12	061100049000	WASHER FLAT OS 5/16" SS
19	8	061060050000	HEX NUT 5/16-18 W/INSERT SS
20	1	1920016590	STRAIN RELIEF 90, .50 BLK W-NUT
21	1	4928402800	CONDUIT .50 FLEX BLK
22	4	061142150016	BOLT HEX 5/16-18 X 1.0LG SS
23	4	061142150032	BOLT HEX 5/16-18 X 2" SS
24	4	061110049000	WASHER FENDER .312 SS

Refer to drawing on next page.



PREFILTRATION CARTRIDGE FILTER ELEMENT WARNING:

Do not use third party Prefiltration Elements (Plankton Filter Elements, Prefilter Elements, Commercial Prefilter Elements, or Oil/Water Separator Elements). Use only Sea Recovery supplied Prefiltration Elements. Third party prefiltration elements on the market do not properly fit into the Sea Recovery Filter Housings, the seams fall apart, and they will allow by-pass resulting in EXTENSIVE AND EXPENSIVE DAMAGE TO THE HIGH PRESSURE PUMP AS WELL AS PREMATURE FOULING OF THE R.O. MEMBRANE ELEMENT.

Damage caused to the Sea Recovery High Pressure Pump, R.O. Membrane Element, or any other component from the use of third party, non Sea Recovery supplied, filter elements is the responsibility and liability of the operator and is not covered by the Sea Recovery Warranty.

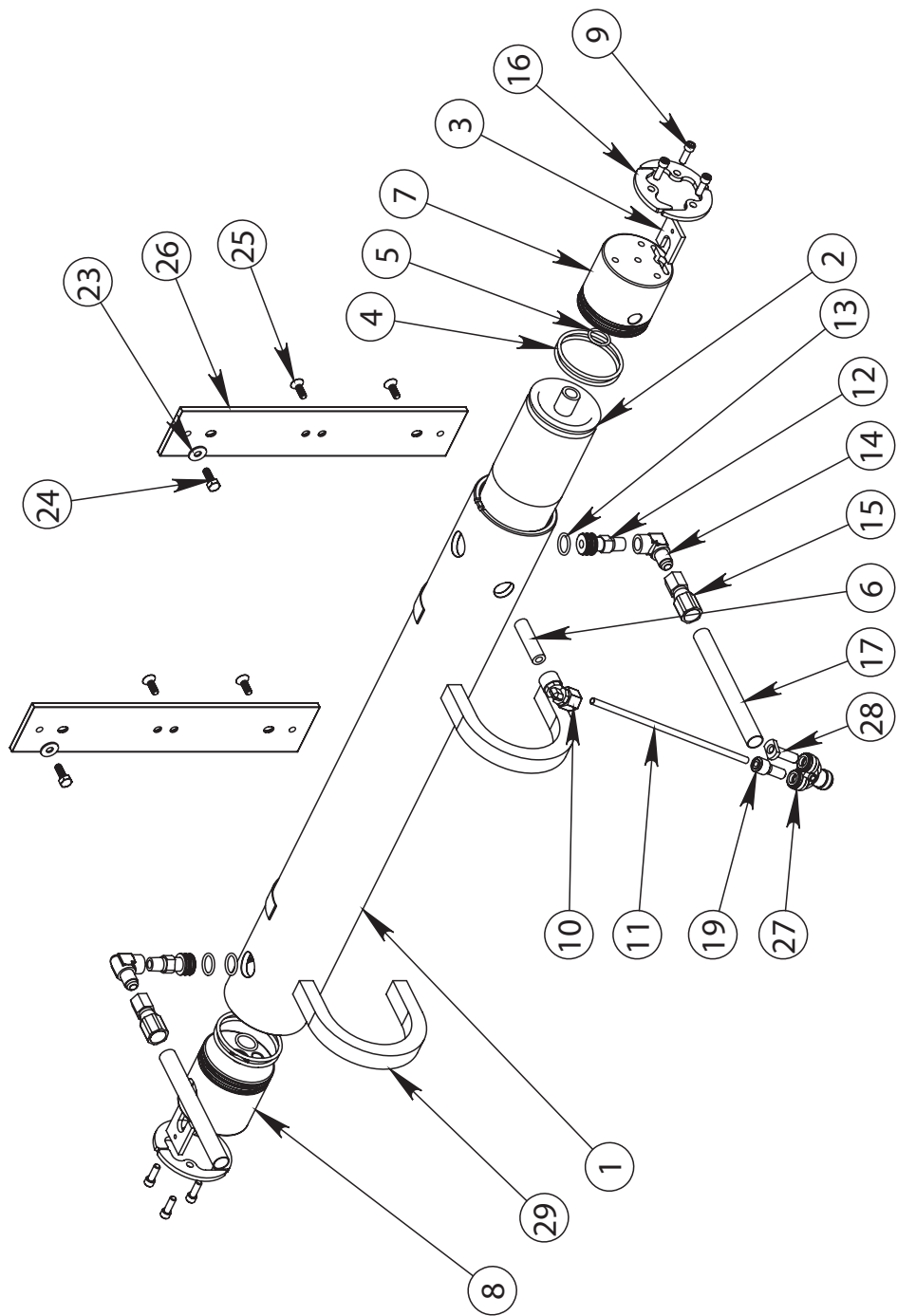
FILTER ELEMENT CAUTION:

Do not use "string wound" or "fiber" type prefilter elements. These type of elements are designed for the Photographic Film Developing industry. When used in sea water they will plug up rapidly in 1/10th or less the time causing frequent shut down of the system and very frequent changing resulting in very high cost of maintenance.

B198000032 MEMBRANE RACK 450-1

ITEM NO.	QTY	PART NO.	DESCRIPTION
1	1	2408132500	VESSEL HIGH PRESSURE 450GPD
2	1	2724011233	MEMBRANE 450GPD W-SEAL
3	2	0520210600	RETAINER PORT MVA AW
4	4	2614014900	O-RING 230 BRINE 3" END PLUG
5	2	2614010100	O-RING 116 PRODUCT
6	1	0101370820	NIPPLE .25 NPT X 2.0 PVC
7	1	2453502402	END PLUG DUAL 3" AW
8	1	2453502403	END PLUG SINGLE 3 AW LONGER
9	6	061162345012	SC SOC CAP 1/4-20 X 3/4 SS
10	1	0204010869	ELB90 1/4 TUBE X 1/4 FNPT PLASTIC
11	1	0312121969	TUBE 1/4 BLACK
12	2	0117410800	NIPPLE HP MVA AW
13	4	2614017900	O-RING 115 INTERCONNECT AW
14	2	1317011769	ELB90 6 FLARE X .25 FPT SS
15	2	1317481969	SWIVEL FITTING 6 SS P
16	2	20201030000	SEGMENT RING AW (SET)
17	2	2432160669	HOSE HP -6P
18	2	2632180426	DECOFELT .125 x 1.25 BLK
19	1	0204690100	REDUCER .375 x .25 JQ
20	1	2220010660	LABEL MEMBRANE SERIAL NO
21	1	2234011260	LABEL INLET (SRC BLUE)
22	1	2234011360	LABEL OUTLET (SRC BLUE)
23	2	061100043000	WASHER FLAT OS 1/4" SS
24	2	061142145012	BOLT HEX 1/4-20 X 3/4 SS
25	4	061161845012	SC ALLEN FLAT 1/4-20 X 3/4 SS
26	2	0520051800	MVA RACK AW SERIES
27	1	0204741800	UNION TEE 3/8 X 3/8 X 3/8 DIV
28	1	0204990200	PLUG .375 JQ
29	2	05202401GR	BRACKET MVA U-CLAMP

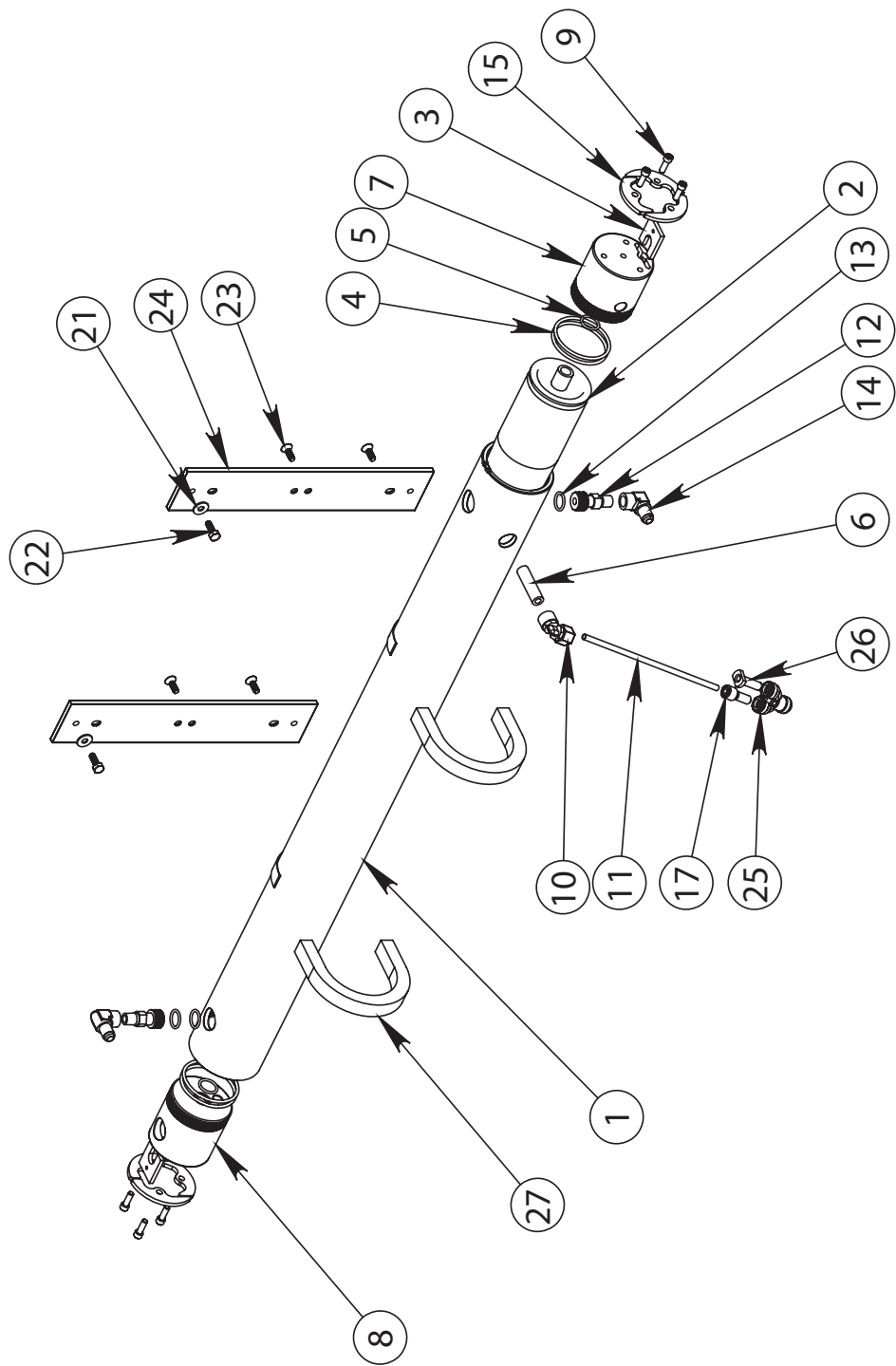
Refer to drawing on next page.



B198000033 MEMBRANE RACK 700-1

ITEM NO.	QTY.	PART NO.	DESCRIPTION
1	1	2408132500-01	VESSEL HIGH PRESSURE 700GPD
2	1	2724011333	MEMBRANE 700GPD W-SEAL
3	2	0520210600	RETAINER PORT MVA AW
4	4	2614014900	O-RING 230 BRINE 3" END PLUG
5	2	2614010100	O-RING 116 PRODUCT
6	1	0101370820	NIPPLE .25 NPT X 2.0 PVC
7	1	2453502402	END PLUG DUAL 3" AW
8	1	2453502403	END PLUG SINGLE 3 AW LONGER
9	6	061162345012	SC SOC CAP 1/4-20 X 3/4 SS
10	1	0204010869	ELB90 1/4 TUBE X 1/4 FNPT PLASTIC
11	1	0312121969	TUBE 1/4 BLACK
12	2	0117410800	NIPPLE HP MVA AW
13	4	2614017900	O-RING 115 INTERCONNECT AW
14	2	1317011769	ELB90 6 FLARE X .25 FPT SS
15	2	20201030000	SEGMENT RING AW (SET)
16	2	2632180426	DECOFELT .125 x 1.25 BLK
17	1	0204690100	REDUCER .375 x .25 JQ
18	1	2220010660	LABEL MEMBRANE SERIAL NO
19	1	2234011260	LABEL INLET (SRC BLUE)
20	1	2234011360	LABEL OUTLET (SRC BLUE)
21	2	061100043000	WASHER FLAT OS 1/4" SS
22	2	061142145012	BOLT HEX 1/4-20 X 3/4 SS
23	4	061161845012	SC ALLEN FLAT 1/4-20 X 3/4 SS
24	2	0520051800	MVA RACK AW SERIES
25	1	0204741800	UNION TEE 3/8 X 3/8 X 3/8 DIV
26	1	0204990200	PLUG .375 JQ
27	2	05202401GR	BRACKET MVA U-CLAMP

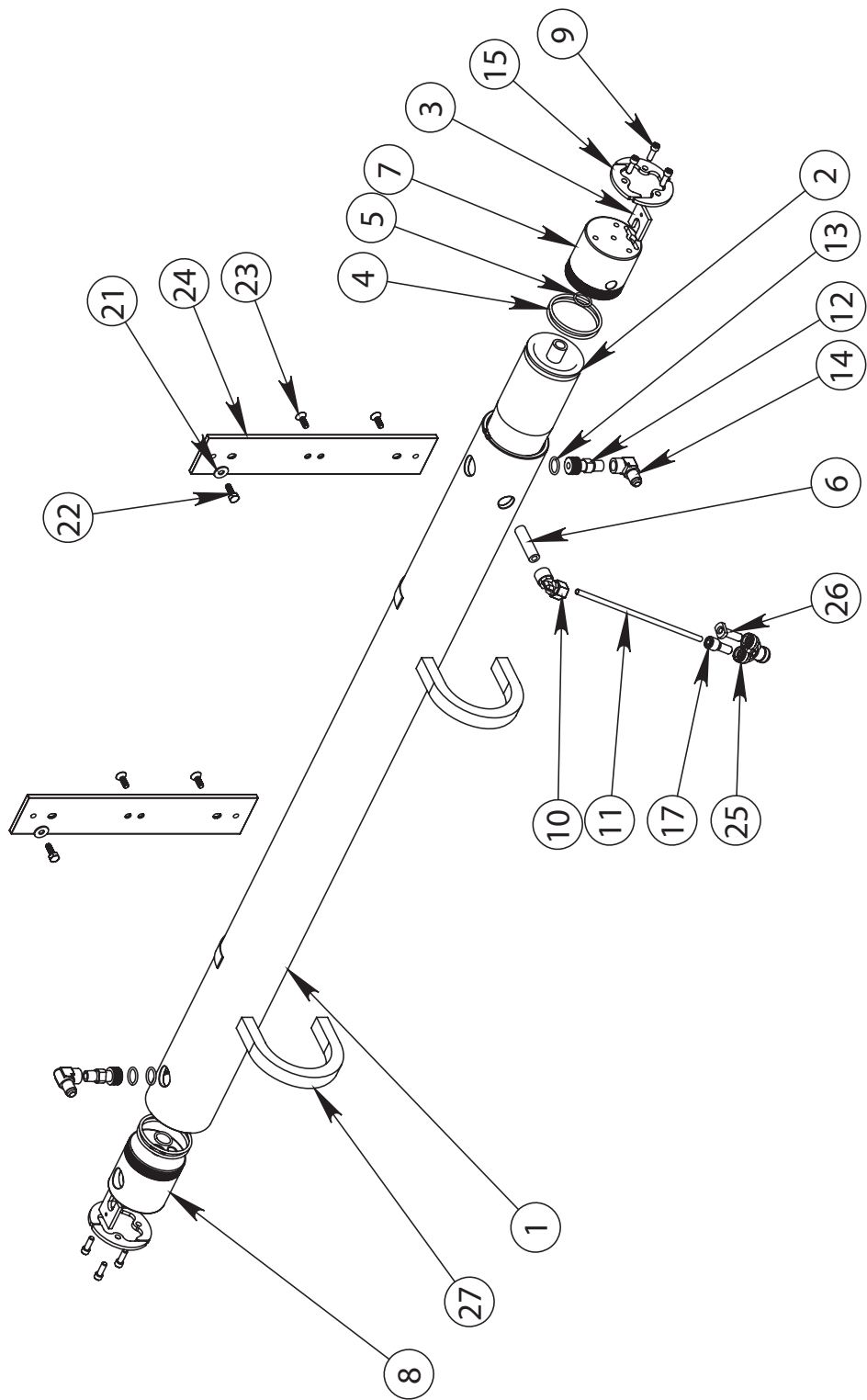
Refer to drawing on next page.



B198000034 MEMBRANE RACK 900-1

ITEM NO.	QTY.	PART NO.	DESCRIPTION
1	1	2408132500-02	VESSEL HIGH PRESSURE 900GPD
2	1	2724011433	MEMBRANE 900GPD W/SEAL
3	2	0520210600	RETAINER PORT MVA AW
4	4	2614014900	O-RING 230 BRINE 3" END PLUG
5	2	2614010100	O-RING 116 PRODUCT
6	1	0101370820	NIPPLE .25 NPT X 2.0 PVC
7	1	2453502402	END PLUG DUAL 3" AW
8	1	2453502403	END PLUG SINGLE 3 AW LONGER
9	6	061162345012	SC SOC CAP 1/4-20 X 3/4 SS
10	1	0204010869	ELB90 1/4 TUBE X 1/4 FNPT PLASTIC
11	1	0312121969	TUBE 1/4 BLACK
12	2	0117410800	NIPPLE HP MVA AW
13	4	2614017900	O-RING 115 INTERCONNECT AW
14	2	1317011769	ELB90 6 FLARE X .25 FPT SS
15	2	20201030000	SEGMENT RING AW (SET)
16	2	2632180426	DECOFELT .125 x 1.25 BLK
17	1	0204690100	REDUCER .375 x .25 JQ
18	1	2220010660	LABEL MEMBRANE SERIAL NO
19	1	2234011260	LABEL INLET (SRC BLUE)
20	1	2234011360	LABEL OUTLET (SRC BLUE)
21	2	061100043000	WASHER FLAT OS 1/4" SS
22	2	061142145012	BOLT HEX 1/4-20 X 3/4" SS
23	4	061161845012	SC ALLEN FLAT 1/4-20 X 3/4" SS
24	2	0520051800	MVA RACK AW SERIES
25	1	0204741800	UNION TEE 3/8 X 3/8 X 3/8 DIV
26	1	0204990200	PLUG .375 JQ
27	2	05202401GR	BRACKET MVA U-CLAMP

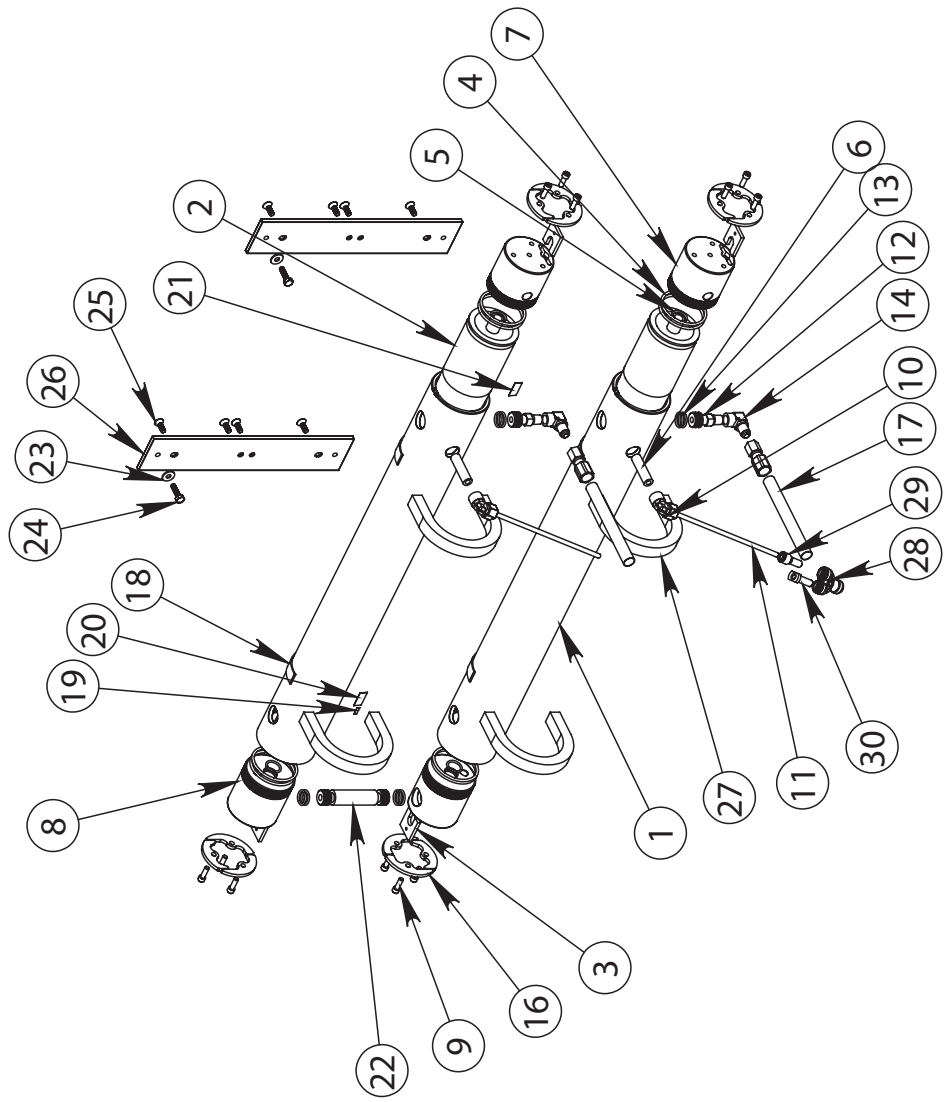
Refer to drawing on next page.



B198000035 MEMBRANE RACK 900-2

ITEM NO.	QTY.	PART NUMBER	DESCRIPTION
1	2	2408132500	VESSEL HIGH PRESSURE 450GPD
2	2	2724011233	MEMBRANE 450GPD W-SEAL
3	4	0520210600	RETAINER PORT MVA AW
4	8	2614014900	O-RING 230 BRINE 3" END PLUG
5	4	2614010100	O-RING 116 PRODUCT
6	2	0101370820	NIPPLE .25 NPT X 2.0 PVC
7	2	2453502402	END PLUG DUAL 3" AW
8	2	2453502403	END PLUG SINGLE 3 AW LONGER
9	12	061162345012	SC SOC CAP 1/4-20 X 3/4 SS
10	2	0204010869	ELB90 1/4 TUBE X 1/4 FNPT PLASTIC
11	2	0312121969	TUBE 1/4 BLACK
12	2	0117410800	NIPPLE HP MVA AW
13	8	2614017900	O-RING 115 INTERCONNECT AW
14	2	1317011769	ELB90 6 FLARE X .25 FPT SS
15	2	1317481969	SWIVEL FITTING 6 SS P
16	4	20201030000	SEGMENT RING AW (SET)
17	2	2432160669	HOSE HP -6P
18	4	2632180526	DECOFELT 1/16 X 1 BLK ADH BACK
19	2	2220010660	LABEL MEMBRANE SERIAL NO
20	2	2234011260	LABEL INLET (SRC BLUE)
21	2	2234011360	LABEL OUTLET (SRC BLUE)
22	1	2417430800	INTERCONNECT MVA SS AW
23	2	061100043000	WASHER FLAT OS 1/4" SS
24	2	061142145016	BOLT HEX .25-20 X 1.0 SS
25	8	061161845012	SC ALLEN FLAT 1/4-20 X 3/4 SS
26	2	0520051800	MVA RACK AW SERIES
27	4	05202401GR	BRACKET MVA U-CLAMP
28	1	0204741800	UNION TEE 3/8 X 3/8 X 3/8 DIV
29	1	0204690100	REDUCER .375 x .25 JQ
30	1	0204990200	PLUG .375 JQ

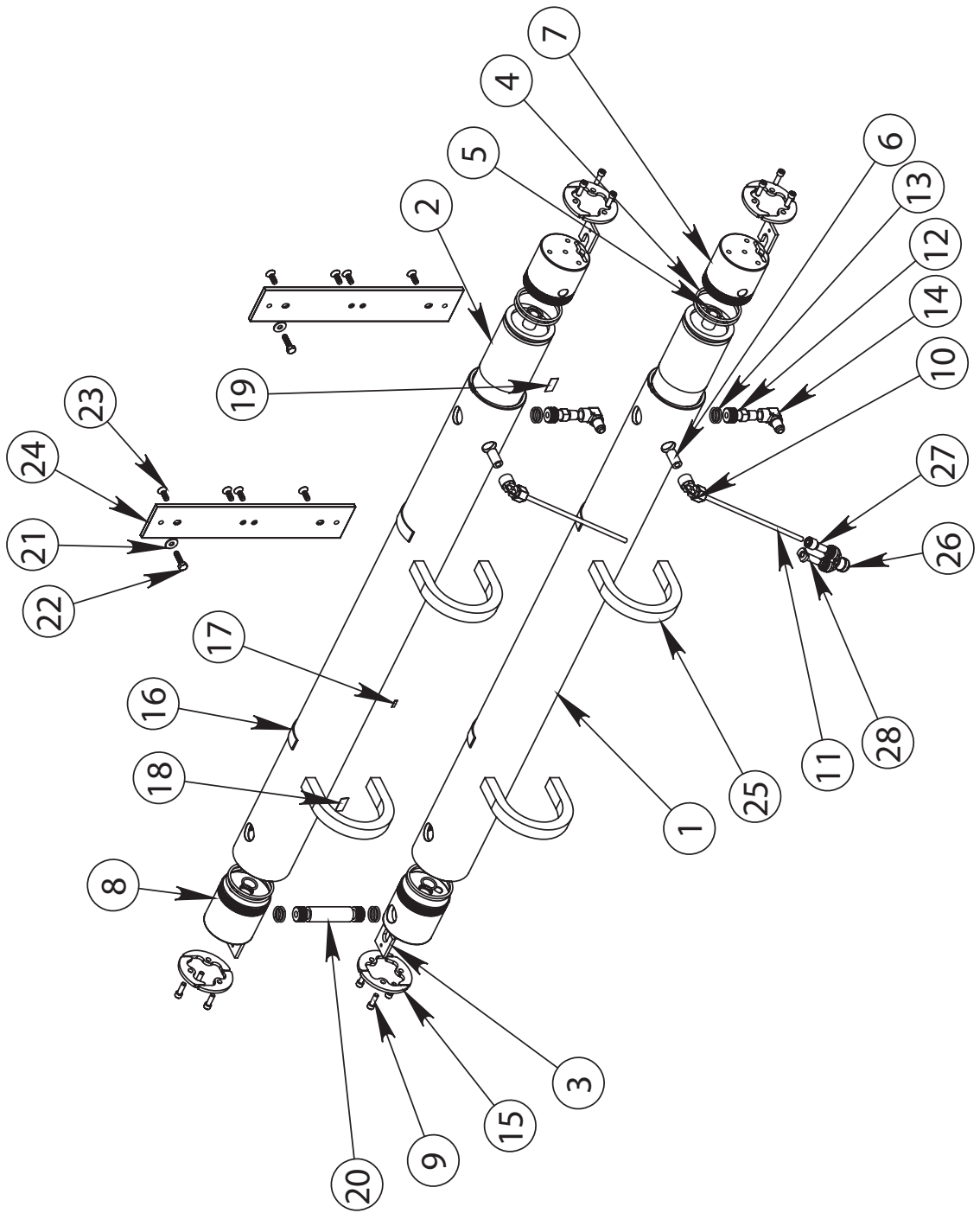
Refer to drawing on next page.



B198000036 MEMBRANE RACK 1400-2

ITEM NO.	QTY.	PART NO.	DESCRIPTION
1	2	2408132500-01	VESSEL HIGH PRESSURE 700GPD
2	2	2724011333	MEMBRANE 700GPD W-SEAL
3	4	0520210600	RETAINER PORT MVA AW
4	8	2614014900	O-RING 230 BRINE 3" END PLUG
5	4	2614010100	O-RING 116 PRODUCT
6	2	0101370815	NIPPLE 1/4 NPT X 1 1/2 PVC
7	2	2453502402	END PLUG DUAL 3" AW
8	2	2453502403	END PLUG SINGLE 3 AW LONGER
9	12	061162345012	SC SOC CAP 1/4-20 X 3/4 SS
10	2	0204010869	ELB90 1/4 TUBE X 1/4 FNPT PLASTIC
11	2	0312121969	TUBE 1/4 BLACK
12	2	0117410800	NIPPLE HP MVA AW
13	8	2614017900	O-RING 115 INTERCONNECT AW
14	2	1317011769	ELB90 6 FLARE X .25 FPT SS
15	4	20201030000	SEGMENT RING AW (SET)
16	4	2632180526	DECOFELT 1/16 X 1 BLK ADH BACK
17	2	2220010660	LABEL MEMBRANE SERIAL NO
18	2	2234011260	LABEL INLET (SRC BLUE)
19	2	2234011360	LABEL OUTLET (SRC BLUE)
20	1	2417430800	INTERCONNECT MVA SS AW
21	2	061100043000	WASHER FLAT OS 1/4" SS
22	2	061142145016	BOLT HEX .25-20 X 1.0 SS
23	8	061161845012	SC ALLEN FLAT 1/4-20 X 3/4 SS
24	2	0520051800	MVA RACK AW SERIES
25	4	05202401GR	BRACKET MVA U-CLAMP
26	1	0204741800	UNION TEE 3/8 X 3/8 X 3/8 DIV
27	1	0204690100	REDUCER .375 x .25 JQ
28	1	0204990200	PLUG .375 JQ

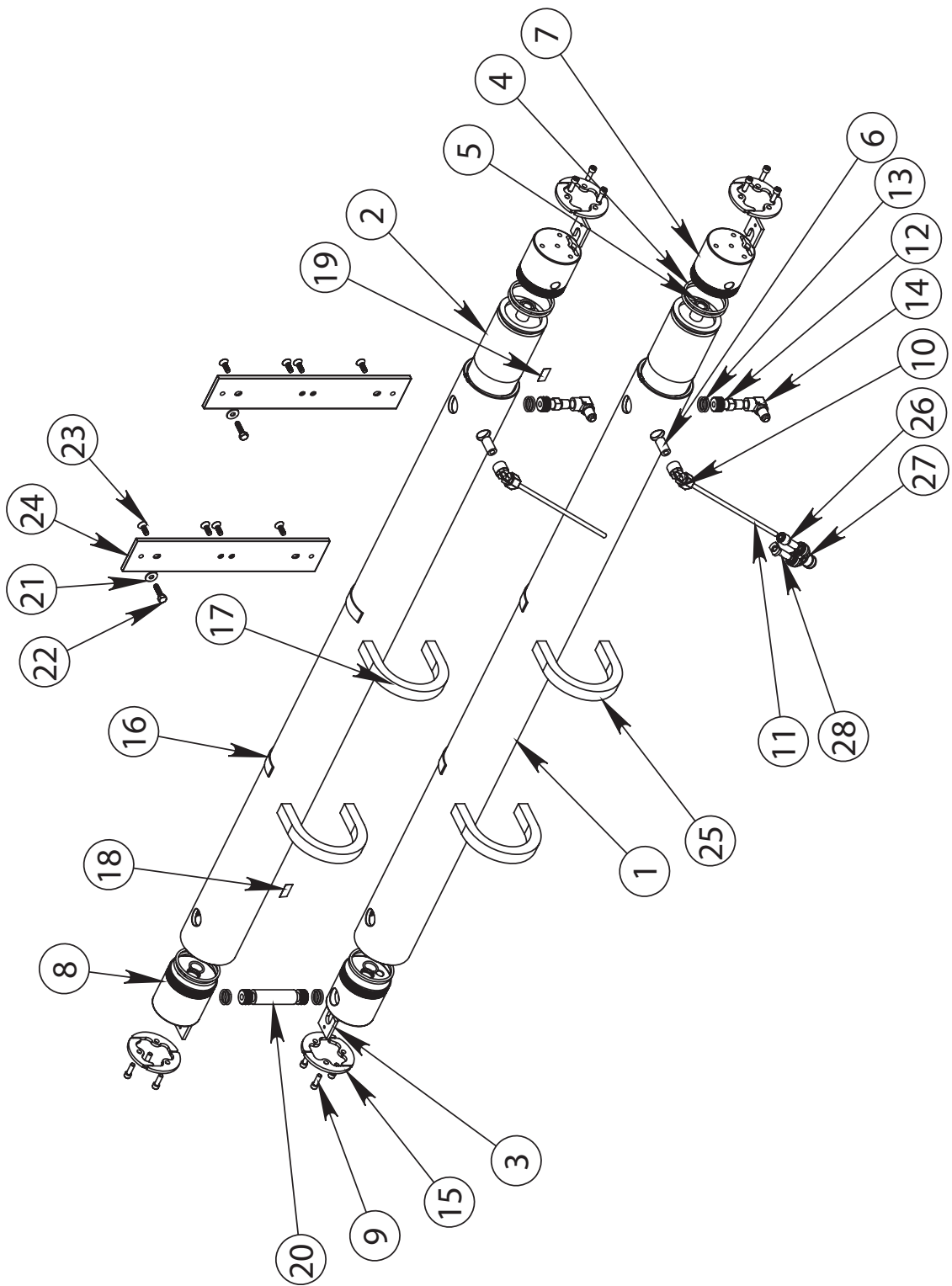
Refer to drawing on next page.



B198000037 MEMBRANE RACK 1800-2

ITEM NO.	QTY.	PART NO.	DESCRIPTION
1	2	2408132500-02	VESSEL HIGH PRESSURE 900GPD
2	2	2724011433	MEMBRANE 900GPD W/SEAL
3	4	0520210600	RETAINER PORT MVA AW
4	8	2614014900	O-RING 230 BRINE 3" END PLUG
5	4	2614010100	O-RING 116 PRODUCT
6	2	0101370815	NIPPLE 1/4 NPT X 1 1/2 PVC
7	2	2453502402	END PLUG DUAL 3" AW
8	2	2453502403	END PLUG SINGLE 3 AW LONGER
9	12	061162345012	SC SOC CAP 1/4-20 X 3/4 SS
10	2	0204010869	ELB90 1/4 TUBE X 1/4 FNPT PLASTIC
11	2	0312121969	TUBE 1/4 BLACK
12	2	0117410800	NIPPLE HP MVA AW
13	8	2614017900	O-RING 115 INTERCONNECT AW
14	2	1317011769	ELB90 6 FLARE X .25 FPT SS
15	4	20201030000	SEGMENT RING AW (SET)
16	4	2632180526	DECOFELT 1/16 X 1 BLK ADH BACK
17	2	2220010660	LABEL MEMBRANE SERIAL NO
18	2	2234011260	LABEL INLET (SRC BLUE)
19	2	2234011360	LABEL OUTLET (SRC BLUE)
20	1	2417430800	INTERCONNECT MVA SS AW
21	2	061100043000	WASHER FLAT OS 1/4"SS
22	2	061142145016	BOLT HEX .25-20 X 1.0 SS
23	8	061161845012	SC ALLEN FLAT 1/4-20 X 3/4 SS
24	2	0520051800	MVA RACK AW SERIES
25	4	05202401GR	BRACKET MVA U-CLAMP
26	1	0204690100	REDUCER .375 x .25 JQ
27	1	0204741800	UNION TEE 3/8 X 3/8 X 3/8 DIV
28	1	0204990200	PLUG .375 JQ

Refer to drawing on next page.



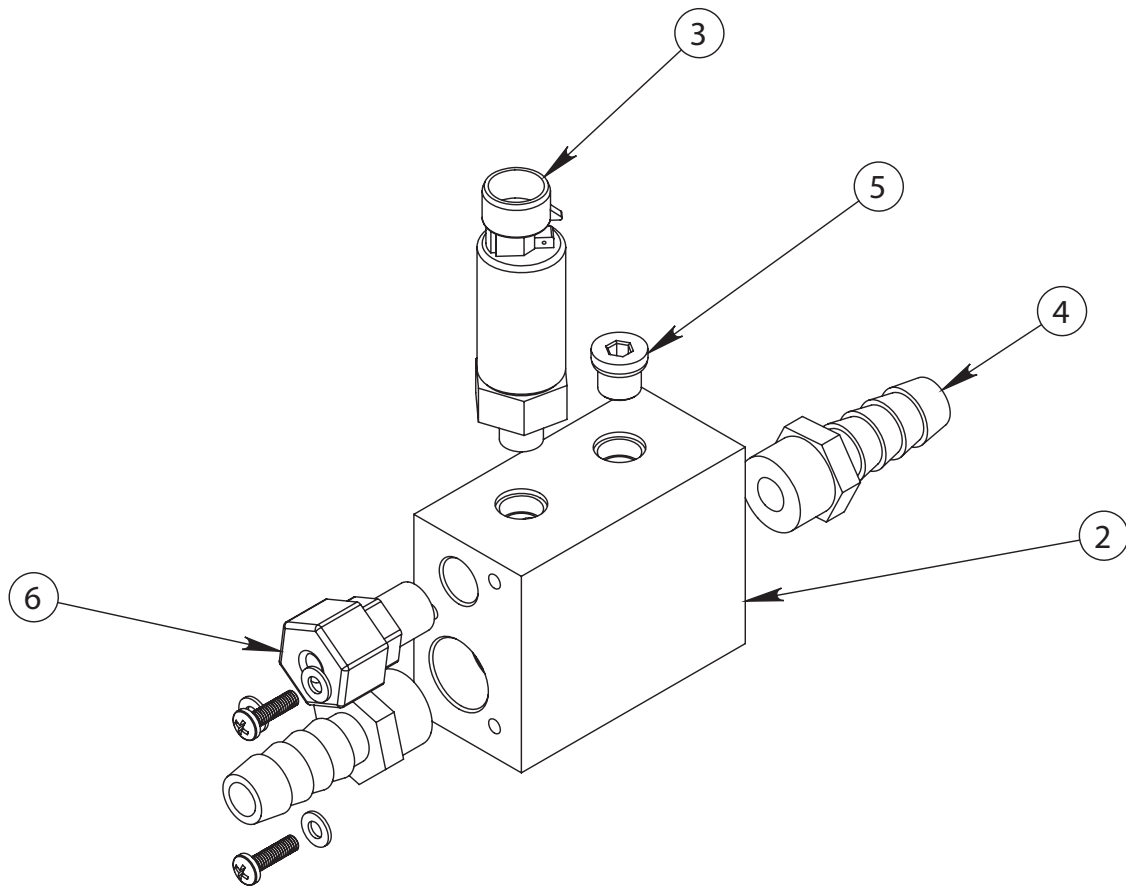
B480930002 WET PLATE ASSY AQW DX III COMPACT

PARTS LIST			
ITEM	PART NUMBER	DESCRIPTION	QTY
1	14012007	MAMANIFOLD, AQM 1-4 DV, NYL, PRESS, LOW, 6X1.5X3	1
2	1401096100	VALVE SOLENOID 12VDC	1
3	061160526048	SC 8-32 x 3.00 SS	2
4	0204021869	ELBOW,PP,3/8 ODx3/8 MT	2
5	11026920AO	FLOWMETER IN-LINE .53-7.9GPM	1
6	061160630012	SC PHIL PAN 10-24 X .75 SS	6
7	061080028000	WASHER FLAT #10 SS	6
8	0301094100	PIPE PVC SCH 80 .375 IN x 3	1
9	14012044	MANIFOLD, PROB, NYL, PRESS, LOW, 6X1.5X2	1
10	0117341869	PLUG .375 MNPT SS	1
11	20-4096	PROBE, CONDUCTIVITY, 5-WIRE, 5 LONG CABLE	1
12	0112652000	ADAP 0.38MPTX.75BARB NYL	1
13	061160626012	SC PHIL PAN #8-32 x .75 SS	1
14	061080023000	WASHER,FLAT,#8",SS	1
15	061060026000	NUT,HEX,8-32 W-INSERT SS	1
16	2020083000	PLATE, WATER AQWC DX	1
17	11026520AO	FLOWMETER IN-LINE .07-2.6GPM	1
18	0204012469	ELBOW,PP,1/2 ODx3/8 FT	1
19	0501164800	PIPE SUPPORT .375	1
20	0101551883	ADAPT .375 SL x .375 FIPT PVC	1
21	0101341883	PLUG 0.375 MT	2
22	3131680298	PLUG CONNECTOR DIN 3-PIN	1
23	4942220809	WIRE 18GA 2COND BLUE FLEX C	4 FT

Refer to drawing on next page.

B502160001 MANIFOLD ASSY AQMC / AQW DX RADIAL AXIAL PUMP

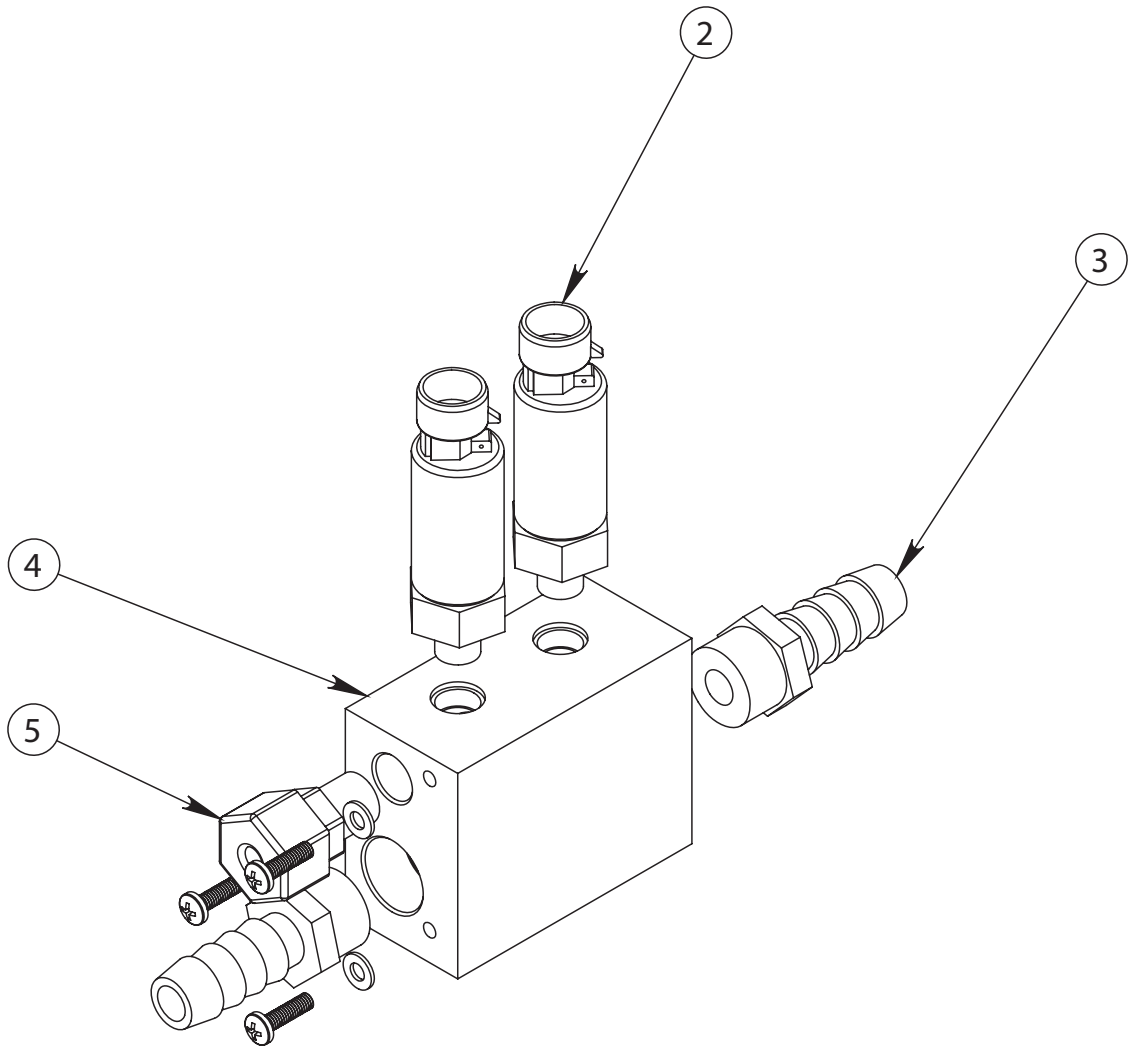
ITEM NO.	QTY.	PART NO.	DESCRIPTION
1	1	B502160001	MANIFOLD ASSY AQMC / AQW DX DX (INCLUDES P/N 2-6)
2	1	5301400801	MANIFOLD LP PICKUP, AQM II
3	1	2317100200	TRANSDUCER 0-200 PSI 7/16" SAE
4	2	01126526DG	ADAP 1/2 MPT X 3/4 BARB NYLON
5	1	0117349400	PLUG .43-20 SS BOSS
6	1	0204090869	CONN 1/4 TUBE X 1/4 MPT PLASTIC



Exploded Parts View

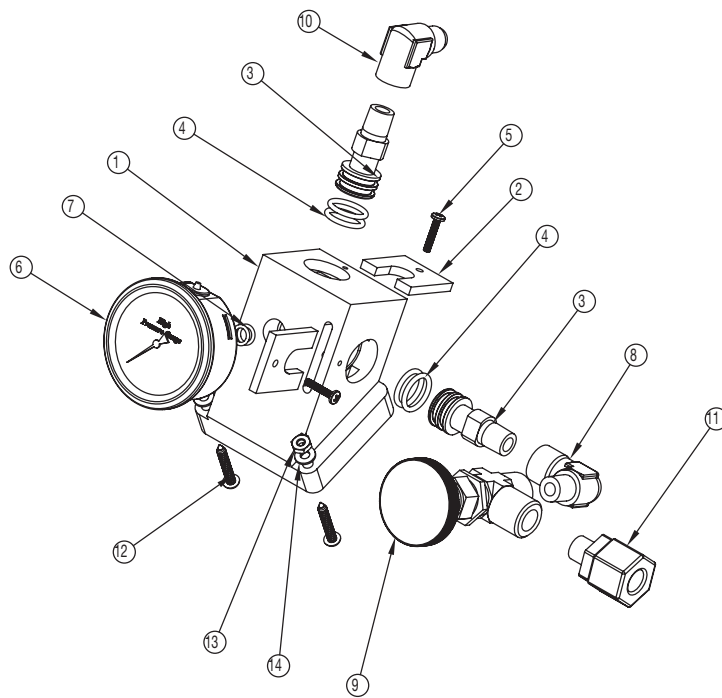
B502160002 MANIFOLD LP ASSY AQMC/AQW DX GP PUMP

ITEM NO.	QTY.	PART NO.	DESCRIPTION
1	1	B502160002	MANIFOLD LP ASSY AQMC / AQW DX (INCLUDES P/N 2-5)
2	2	2317100200	TRANSDUCER 0-200 PSI 7/16" SAE
3	2	01126526DG	ADAP 1/2 MPT X 3/4 BARB NYLON
4	1	5301400801	MANIFOLD LP PICKUP, AQM II
5	1	0204090869	CONN 1/4 TUBE X 1/4 MPT PLASTIC



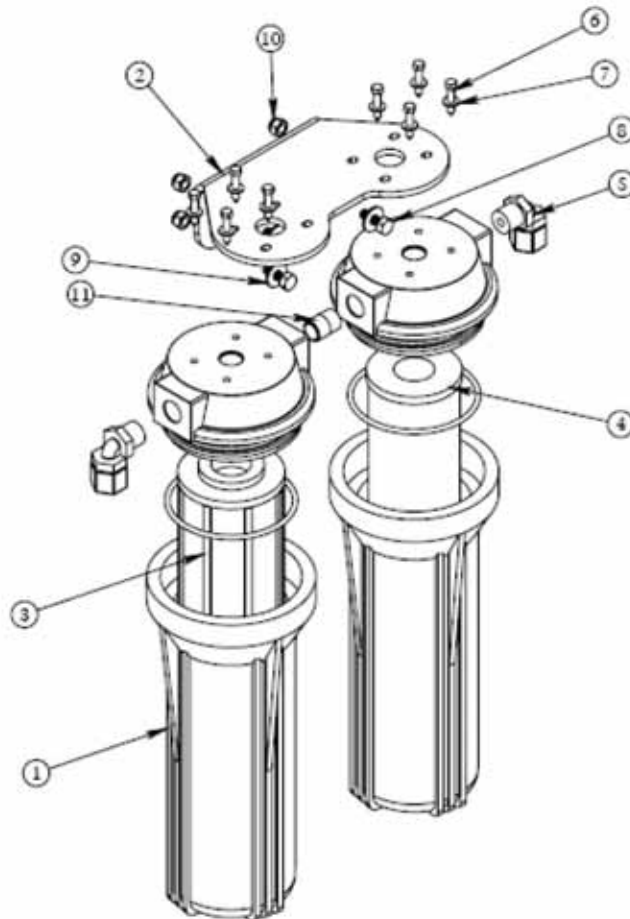
B502930001 - HP MANIFOLD ASSEMBLY

ITEM NO.	PART NUMBER	DESCRIPTION	QTY.
1	5301160900	MANIFOLD HP AQW DX	1
2	0520210600	RETAINER PORT MVA AW	2
3	0117410800	NIPPLE HP MVA AW	2
4	2614017900	O-RING 115 INTERCONNECT AW	4
5	061170618109	SC PHIL PAN A #6 X .75 SS	2
6	10181421CC	GAUGE 0 -1400 CBM. ORING SEAL	1
7	2614015800	ORING 011 GAUGE-PRES SWITCH	2
8	0117230869	ELB90 ST .25 MPT X .25 FPT SS	1
9	1417017896	VALVE PRESS REGULATOR-AS	1
10	1317011769	ELB90 6 FLARE X .25 FPT SS	1
11	0204092369	CONN 1/2 TUBE X 1/4 MPT PLASTIC	1
12	061160131020	SC PHIL RD 10-32 X 1.25 SS	3
13	061010031000	NUT HEX 10-32 SS	3
14	061080028000	WASHER FLAT #10 SS	3



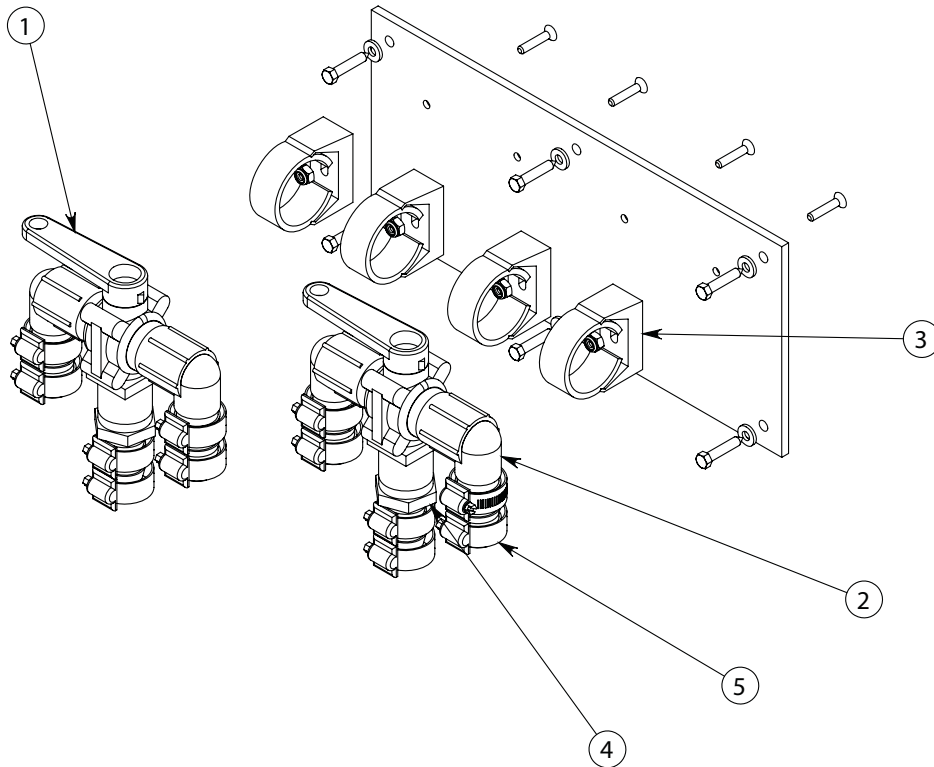
B114140001 - POST FILTER-DUAL ASSY

ITEM NO.	PART NUMBER	DESCRIPTION	QTY.
1	0713020573	FILTER HOUSING/LID 3/8 X 10	2
2	20200402101	DUAL BRACKET, PRE-FILTER, CHRCL/PLNKTN	1
3	08251950AS	ELEMENT PH 9 3/4"	1
4	0803004773	CHARCOAL FILTER 10 IN	1
5	0204021869	ELB90 3/8 TUBE X 3/8 MPT PLASTIC	2
6	061170628016	SC PHIL PAN "A" 10 X 1 SS	8
7	061080028000	WASHER FLAT #10 SS	8
8	061142145012	BOLT HEX 1/4-20 X 3/4 SS	4
9	061100043000	WASHER FLAT OS 1/4"SS	4
10	061060045000	NUT HEX 1/4-20 W/INSERT SS	4
11	01013718CL	NIPPLE 3/8 NPT X CLOSE PVC	1



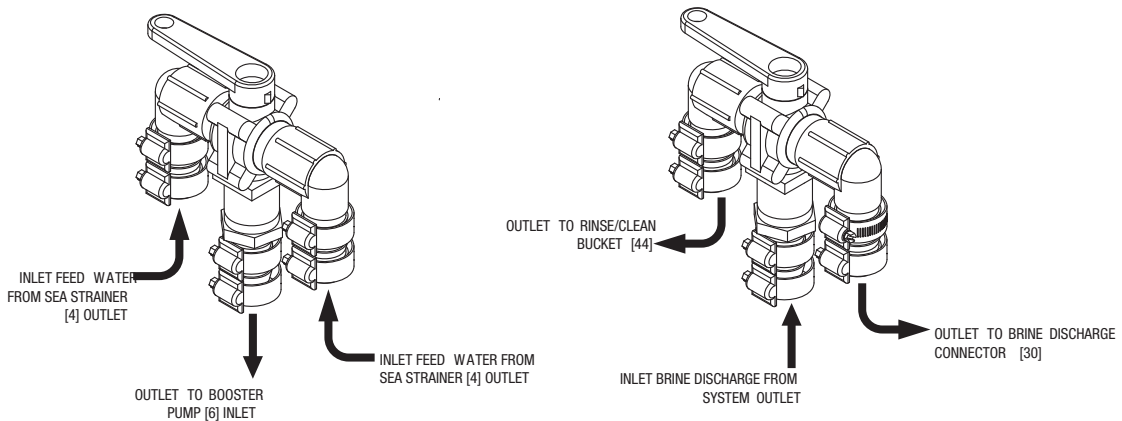
B591120001 CLEAN AND RINSE KIT

ITEM NO.	QTY.	PART NUMBER	DESCRIPTION
1	2	14011334AR	VALVE 3-WAY BALL 3/4 MPT
2	4	0101063783	ELB90 .75 FNPT X .75 BARB PVC
3	4	0501164200	PIPE SUPPORT 1 1/8" #36
4	2	0101613783	ADAP 3/4 FPT X 3/4 BARB PVC
5	12	05181434AA	HOSE CLAMP 3/4" SS



VALVE CONNECTIONS

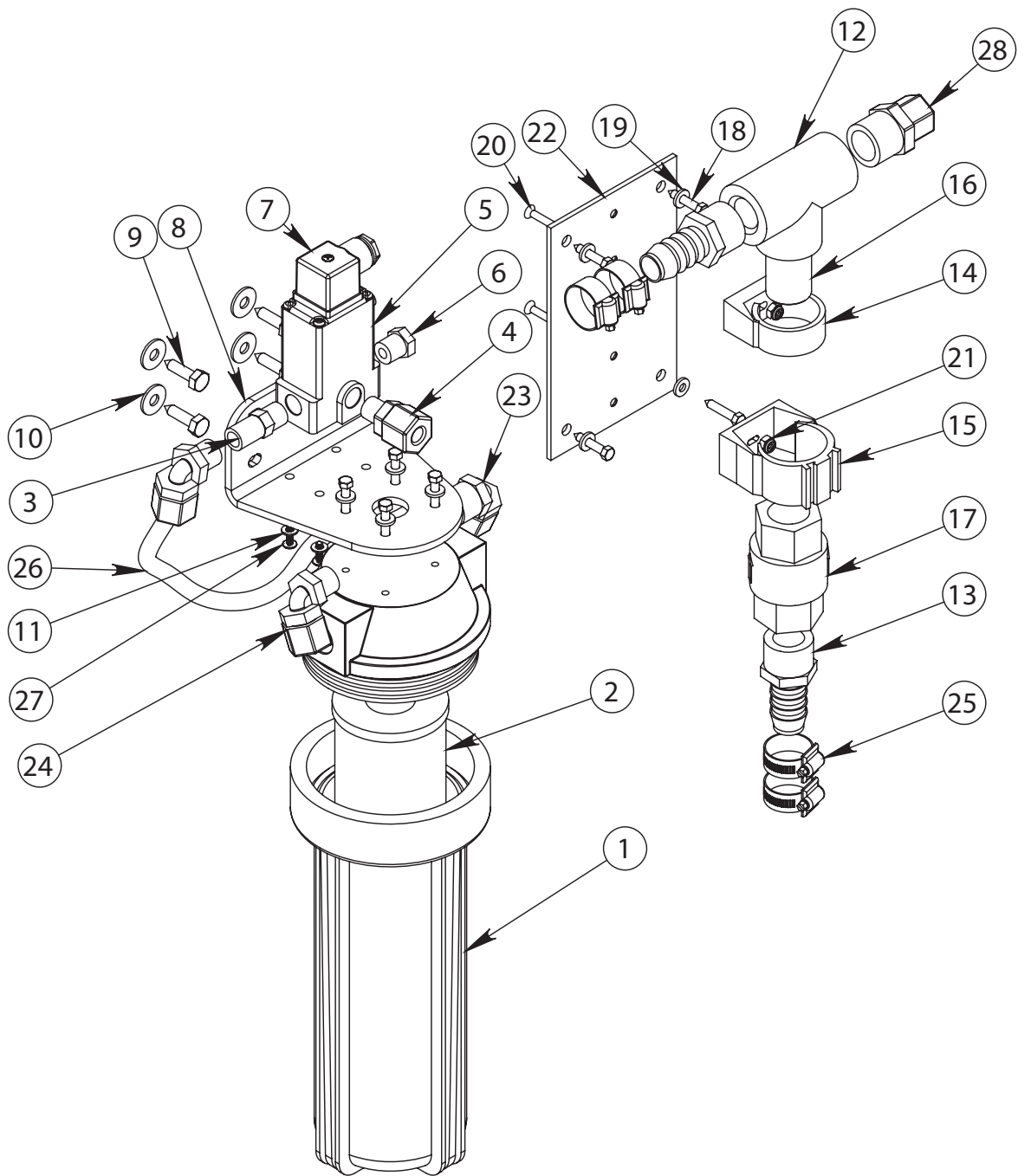
VALVE CONNECTIONS:



B598000008 FRESH WATER FLUSH (0.50 INCH)

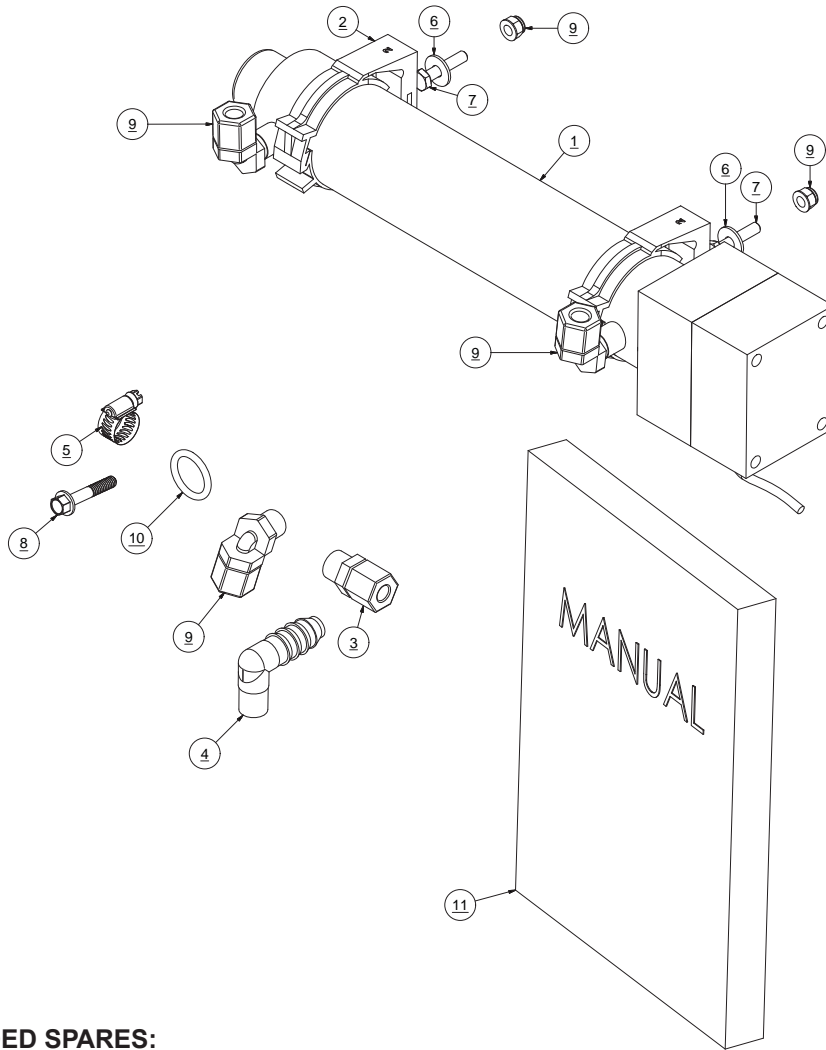
ITEM NO.	QTY.	PART NO.	DESCRIPTION
1	1	0713020873	FILTER HOUSING 1/2 X 10"
2	1	0803004773	CHARCOAL FILTER 10 IN
3	1	14172105AT	VALVE CHECK .25 MNPT SS
4	1	0204091769	CONN 3/8 TUBE X 1/4 MPT PLASTIC
5	1	1401095998	VALVE SOLENOID 12VDC AED/CSFE
6	1	0101340883	PLUG 1/4 MPT PVC
7	1	3131680298	PLUG CONNECTOR DIN 3-PIN
8	1	20200402102	SINGLE FILTER BRACKET
9	4	061172143016	SC HEX "A" 1/4 X 1.0 SS
10	4	061100043000	WASHER FLAT OS 1/4"SS
11	4	065080023000	WASHER FLAT #8 NYLON
12	1	0101423783	TEE .75 FNPT x .75 FNPT x .75 FNPT PVC
13	2	0101653783	ADAP 3/4 MPT X 3/4 BARB PVC
14	1	0501164200	PIPE SUPPORT 1 1/8" #36
15	1	0501164500	PIPE SUPPORT 1 1/4"
16	1	01013737CL	NIPPLE .75 NPT X CLOSE PVC
17	1	14012118AR	VALVE CHECK .75 FNPT WITH VITO
18	8	061170628016	SC PHIL PAN "A" 10 X 1 SS
19	8	065080028000	WASHER FLAT #10 NYLON
20	2	061161626012	SC PHIL FLAT 8-32 X 3/4 SS
21	2	061060026000	NUT HEX 8-32 W/INSERT SS
22	1	2020040002	BRACKET CHECK VALVE FWF
23	1	0204011769	ELB90 3/8 TUBE X 1/2 MPT PLAST
24	2	0204011769	ELB90 .375 TUBE x .25 FNPT PLASTIC
25	4	05181432AA	HOSE CLAMP 1/2" SS
26	1	0312123569	TUBE .375 BLACK
27	4	061170623008	SC PHIL PAN "B" #8 X 1/2" SS
28	1	0204092069	CONN 3/8 TUBE X 3/4 MPT PLASTIC

Refer to drawing on next page.



B5262000CV UV STERILIZER 12VDC 2GPM

BILL OF MATERIAL (B.O.M.)			
ITEM NO.	FILE/DWG. NAME	DESCRIPTION	QTY.
1	40000306CV	UV STERILIZER 2 GPM 12VDC	1
2	05011647AI	SUPPORT,PIPE,2.00	2
3	0204091869	FITTING,PP,3/8 ODx3/8 MT	1
4	0254011000	ELB90 0.25 MPT X 0.50BARB NY	2
5	05181432AA	CLAMP,HOSE,SS,1/2"	4
6	061100043000	WASHER FLAT OS .25 SS	2
7	061142145020	SCREW,HEX HEAD,.25-20x1-1/4",SS	2
8	061182143024	SC LAG 0.25 X 1.50 SS	2
9	065070045000	NUT HEX .25-20 FLANGED	2
10	2614019000	O-RING 212 QUARTZ SLEEVE	2
11	B651830001A	OWNERS MANUAL QUICK INSTALLATION UV LIGHT SP SERIES	1



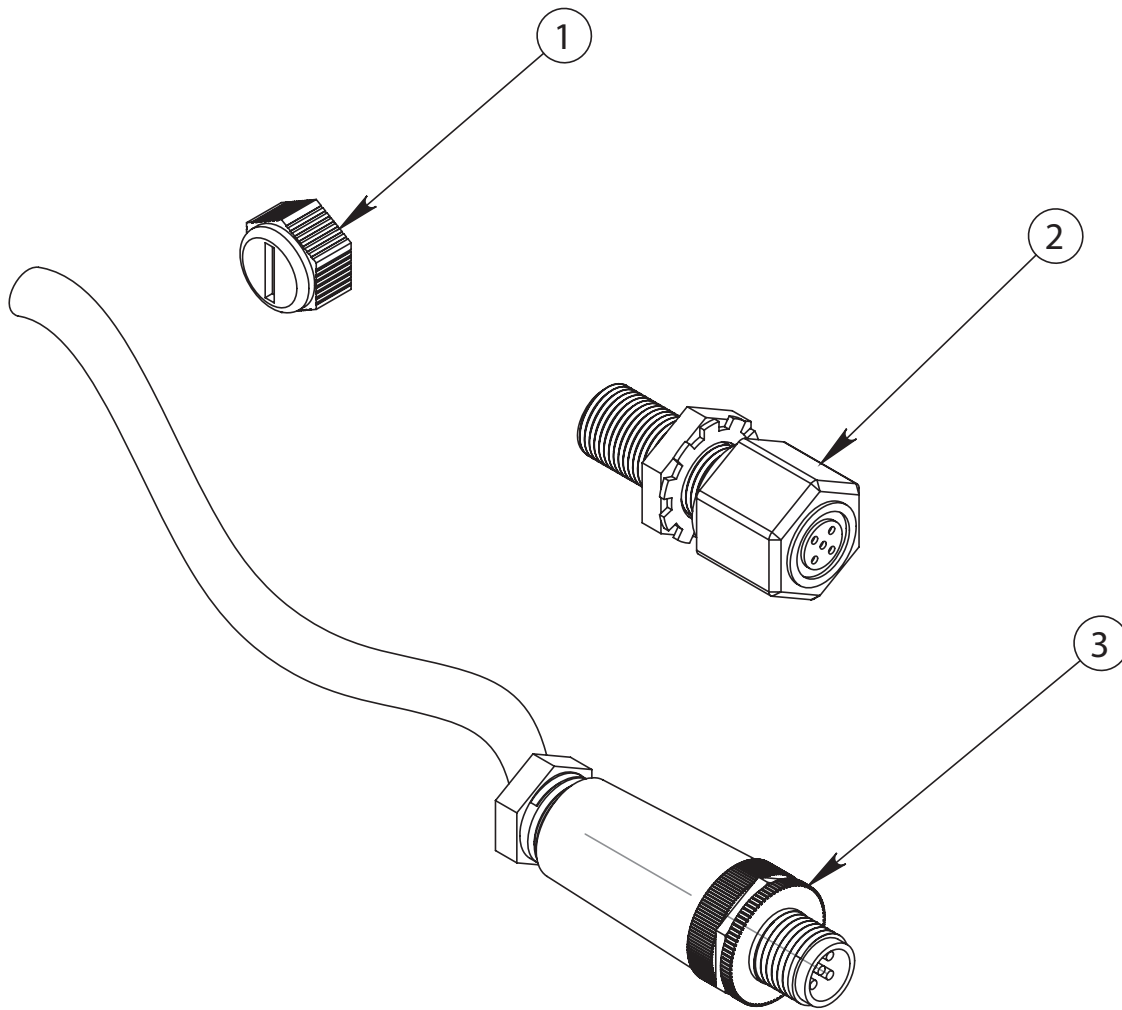
RECOMMENDED SPARES:

QTY.	PART NUMBER	DESCRIPTION
1	40000100CV	UV LAMP 2 GPM

Exploded Parts View

B610140004 NMEA 2000 ENABLED

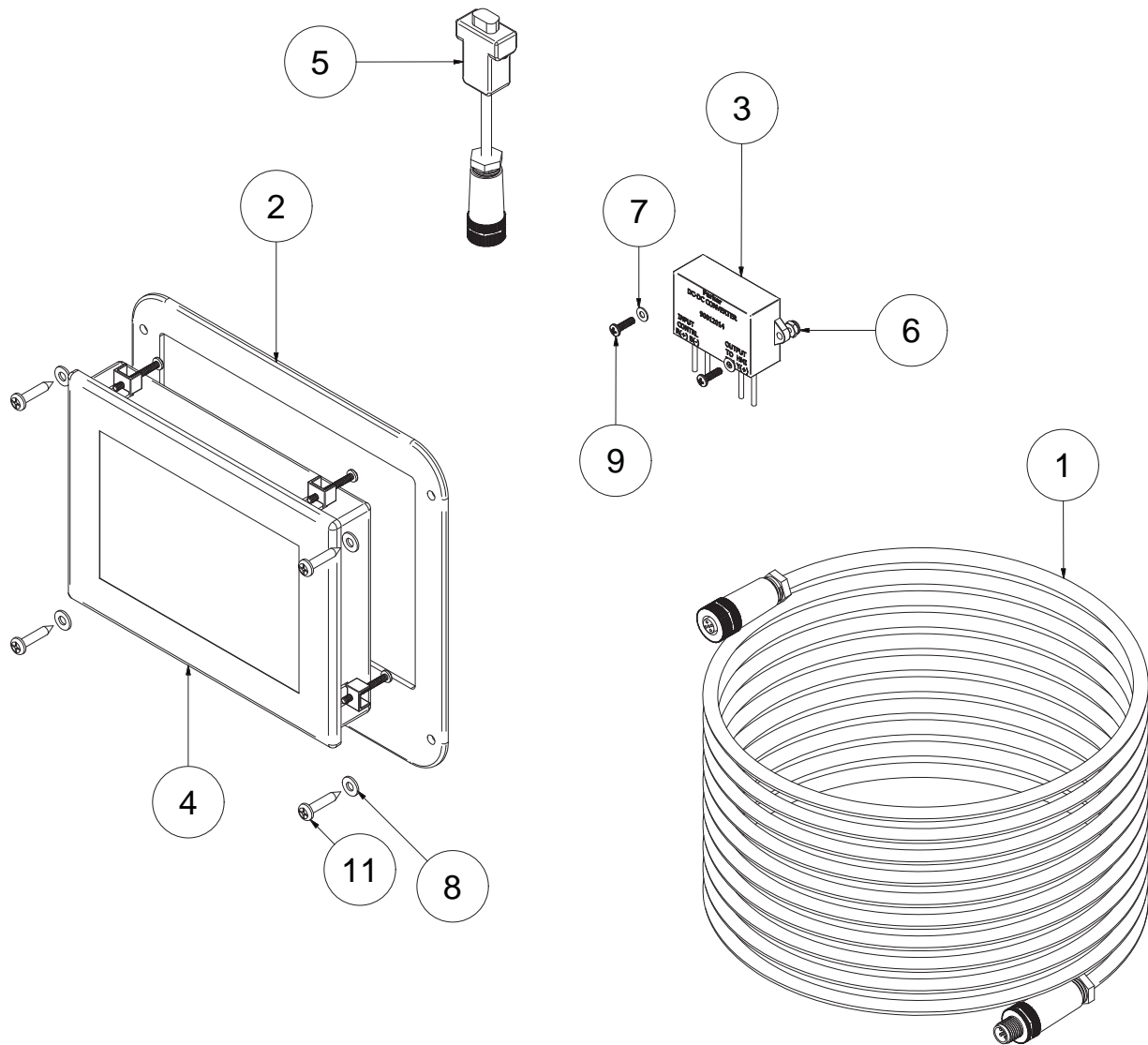
ITEM NO.	QTY.	PART NO.	DESCRIPTION
1	1	31316809MT	MICRO CAP
2	1	31316801MT	MICRO BULKHEAD FEED-THRU ASSY
3	1	31316812MT	MICRO SINGLE ENDED CORDSET MALE



Exploded Parts View

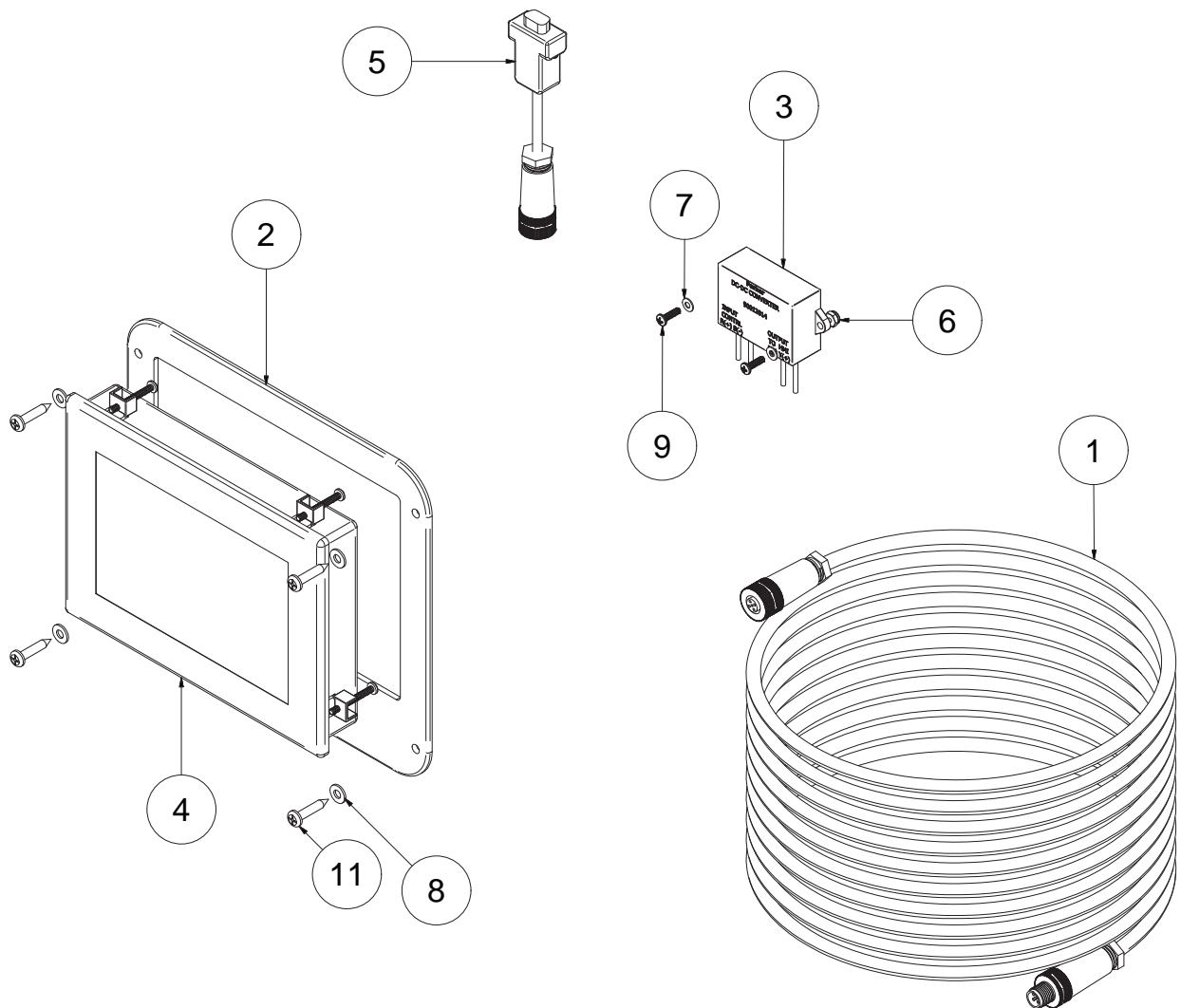
61012029 REMOTE KIT,100 FT CABLE,PARKER

BILL OF MATERIAL (B.O.M.)			
ITEM	PART NUMBER	DESCRIPTION	QTY
1	0901128	REMOTE CABLE ASSY 100' AQM 7IN	1
2	11012072	BRACKET,FRONT COVER,HMI,AQM	1
3	90012014	CONVERTER,12V TO 24V,HMI	1
4	90012015	HMI,DISPLAY,7 IN PROGRAMMED	1
5	90012289	DONGLE,HMI,RS485,POWER,AQ	1
6	061060020000	NUT,HEX 6-32 W-INSERT SS	2
7	061080018000	WASHER FLAT #6 SS	2
8	061080028000	WASHER FLAT #10 SS	4
9	061160620008	SC PHIL PAN 6-32 X .50 SS	2
10	061160620020	SC PHIL PAN 6-32 X 1 1/4 SS	4
11	061170628016	SC PHIL PAN A #10 X 1 SS	4



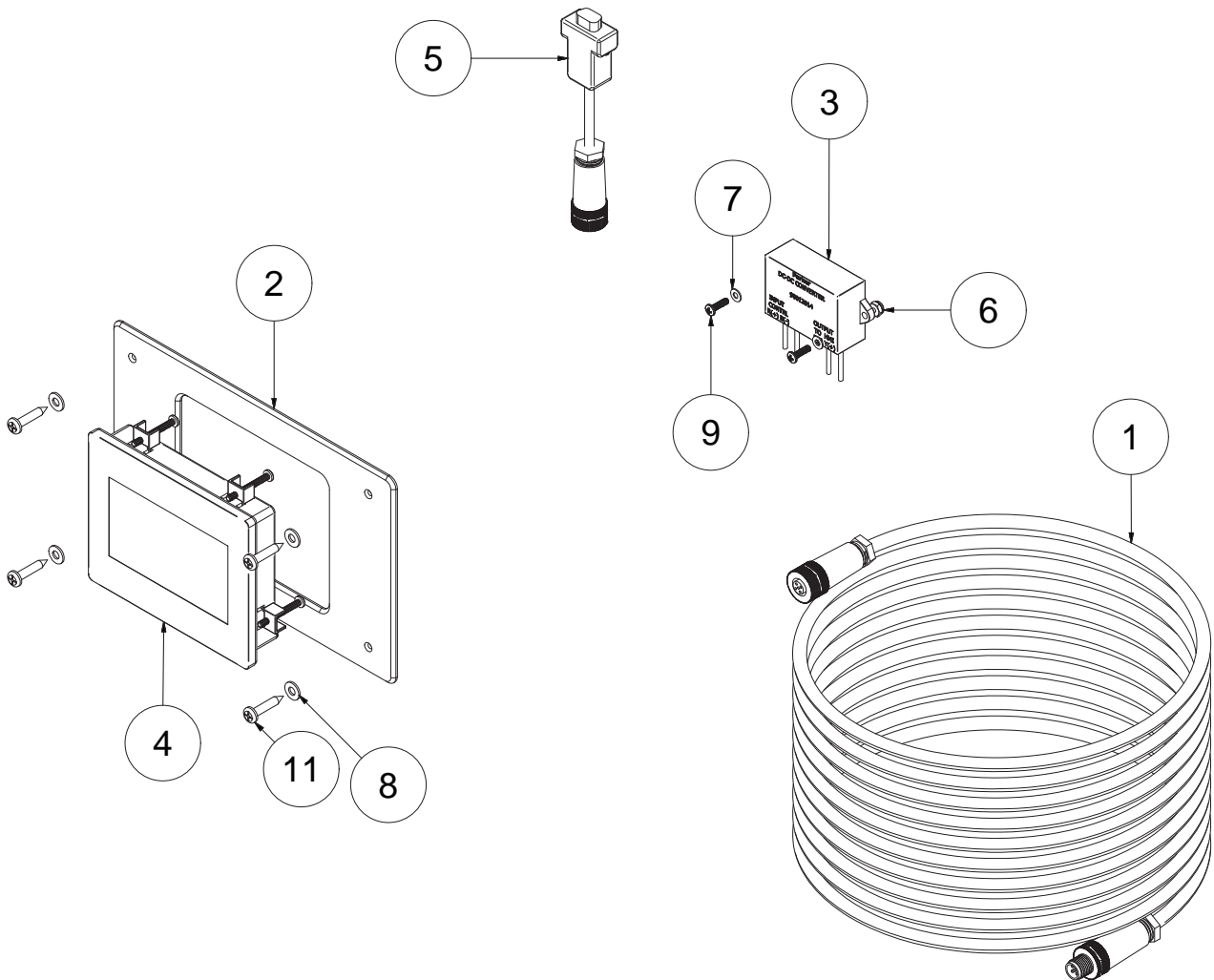
61012030 REMOTE KIT,200 FT CABLE,PARKER

BILL OF MATERIAL (B.O.M.)			
ITEM	PART NUMBER	DESCRIPTION	QTY
1	0901130	REMOTE CABLE ASSY 200' AQM 7IN	1
2	11012072	BRACKET,FRONT COVER,HMI,AQM	1
3	90012014	CONVERTER,12V TO 24V,HMI	1
4	90012015	HMI,DISPLAY,7 IN PROGRAMMED	1
5	90012289	DONGLE,HMI,RS485,POWER,AQ	1
6	061060020000	NUT,HEX 6-32 W-INSERT SS	2
7	061080018000	WASHER FLAT #6 SS	2
8	061080028000	WASHER FLAT #10 SS	4
9	061160620008	SC PHIL PAN 6-32 X .50 SS	2
10	061160620020	SC PHIL PAN 6-32 X 1 1/4 SS	4
11	061170628016	SC PHIL PAN A #10 X 1 SS	4



61012032 REMOTE KIT,200 FT CBL,PRKR 4 IN HMI

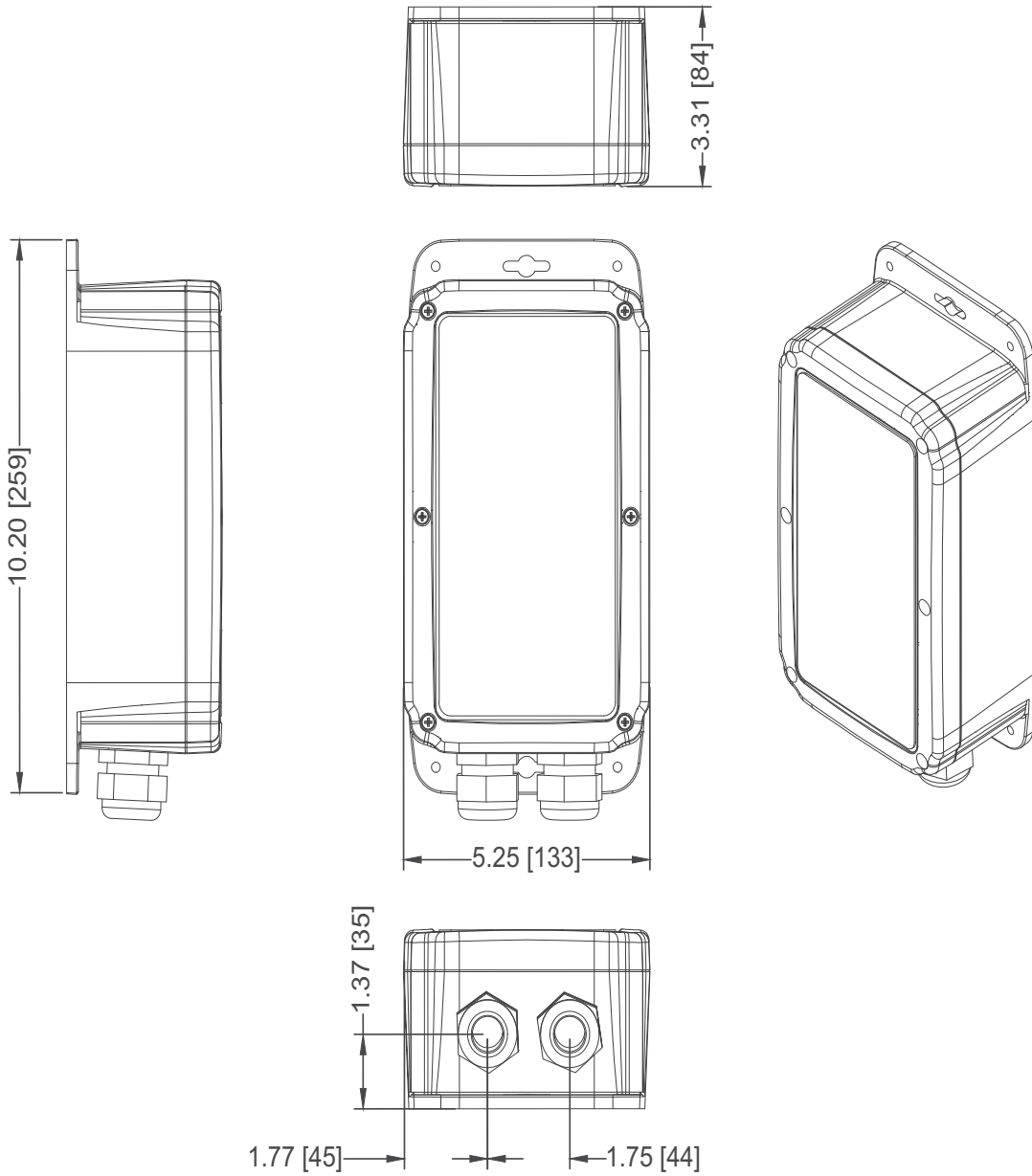
BILL OF MATERIAL (B.O.M.)			
ITEM	PART NUMBER	DESCRIPTION	QTY
1	0901130	REMOTE CABLE ASSY 200' AQM 7IN	1
2	11012164	BEZEL4INCH NEW REMOTE HMI	1
3	90012014	CONVERTER,12V TO 24V,HMI	1
4	90012016	HMI,DISPLAY,4.3" PROGRAMMED	1
5	90012289	DONGLE,HMI,RS485,POWER,AQ	1
6	061060020000	NUT,HEX 6-32 W-INSERT SS	2
7	061080018000	WASHER FLAT #6 SS	2
8	061080028000	WASHER FLAT #10 SS	4
9	061160620008	SC PHIL PAN 6-32 X .50 SS	2
10	061160620020	SC PHIL PAN 6-32 X 1 1/4 SS	4
11	061170628016	SC PHIL PAN A #10 X 1 SS	4



SOFT START ASSY

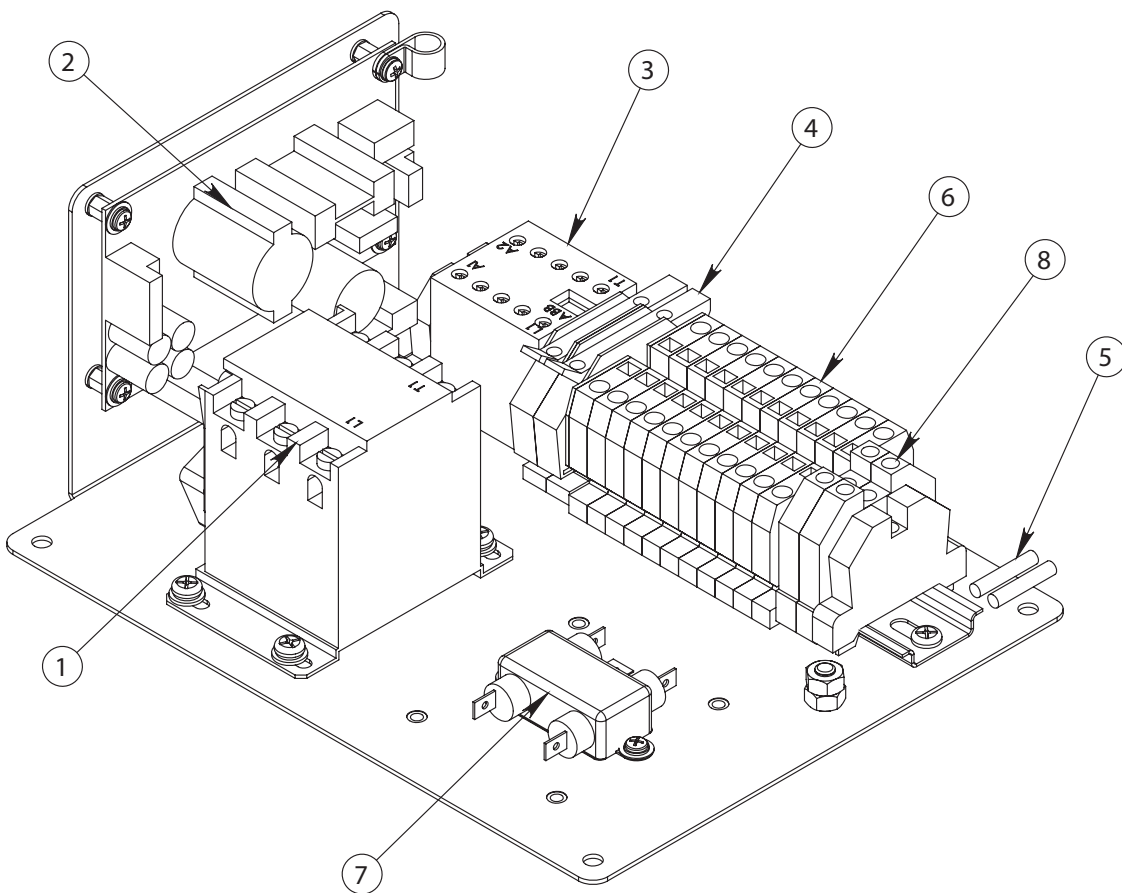
B596800015 SOFT START 115V 50-60HZ

B596800014 SOFT START 230V 50-60HZ



B619160001 CONTROLLER CHASSIS AQMC II 1PH

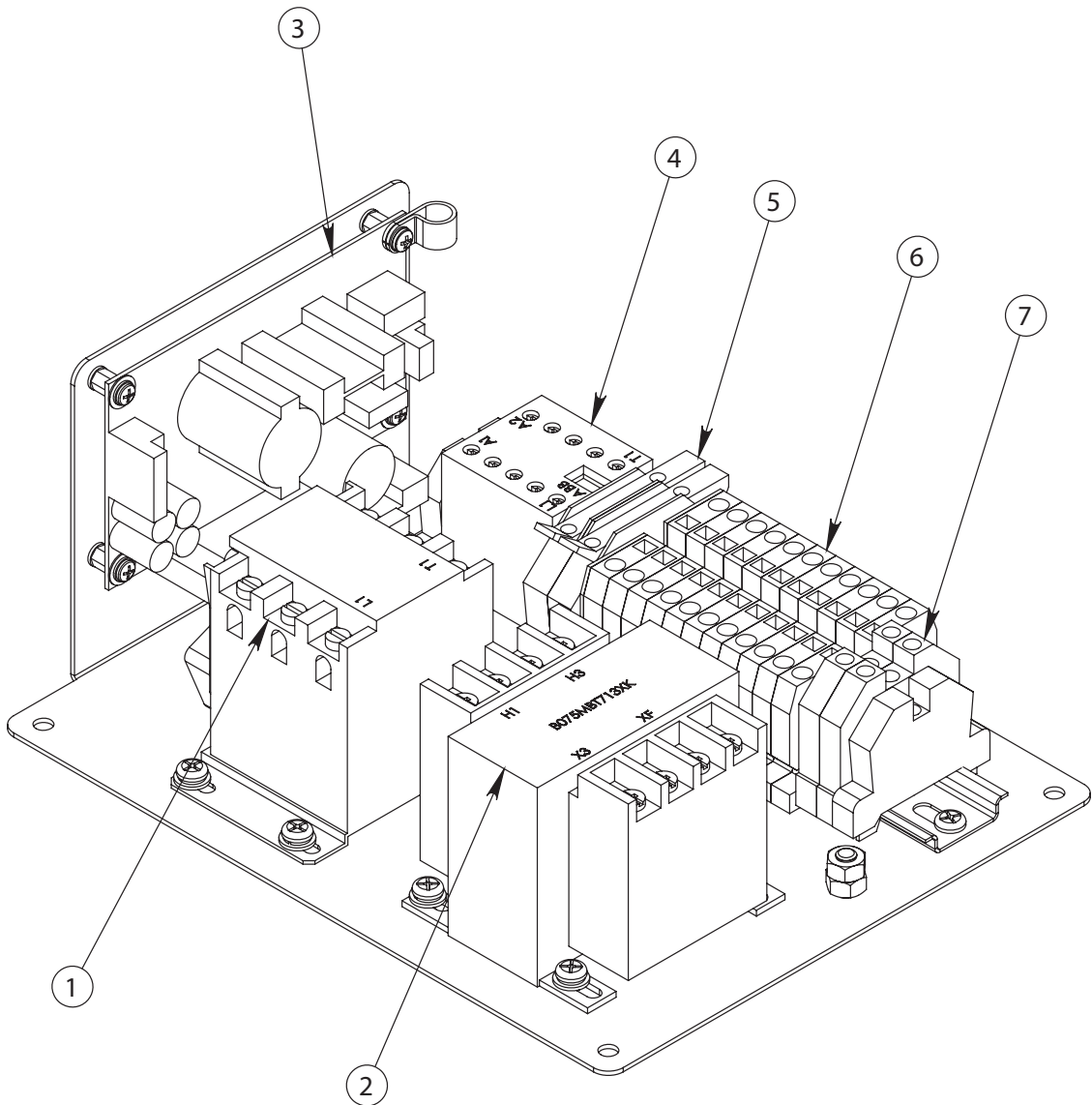
ITEM NO.	QTY.	PART NO.	DESCRIPTION
1	1	31310603BF	CONTACTOR 30A AW>12/99 12VDC
2	1	31314301CW	POWER SUPPLY 12V DC
3	1	31310110BF	CONTACTOR 9A AUX AW>12/99 12VDC
4	2	3131310400	FUSE HOLDER
5	2	3131301500	FUSE QUICK BLOW 2A
6	11	31311523DM	TERMINAL BLOCK
7	1	31318301DK	EMI FILTER
8	2	31311524DM	TERMINAL 8 AWG DIN GREEN



Exploded Parts View

B619160002 CONTROLLER CHASSIS AQMC II 3PH

ITEM NO.	QTY.	PART NO.	DESCRIPTION
1	1	31310603BF	CONTACTOR 30A AW>12/99 12VDC
2	1	3131131500	ELEC TRANSFORMER 480/120 BUCK
3	1	31314301CW	POWER SUPPLY 12V DC
4	1	31310110BF	CONTACTOR 9A AUX AW>12/99 12VDC
5	2	3131310400	FUSE HOLDER
6	11	31311523DM	TERMINAL BLOCK
7	2	31311524DM	TERMINAL 8 AWG DIN GREEN
8	2	3131301500	FUSE QUICK BLOW 2A



This page is intentionally left blank.

HP HOSE ASSEMBLY

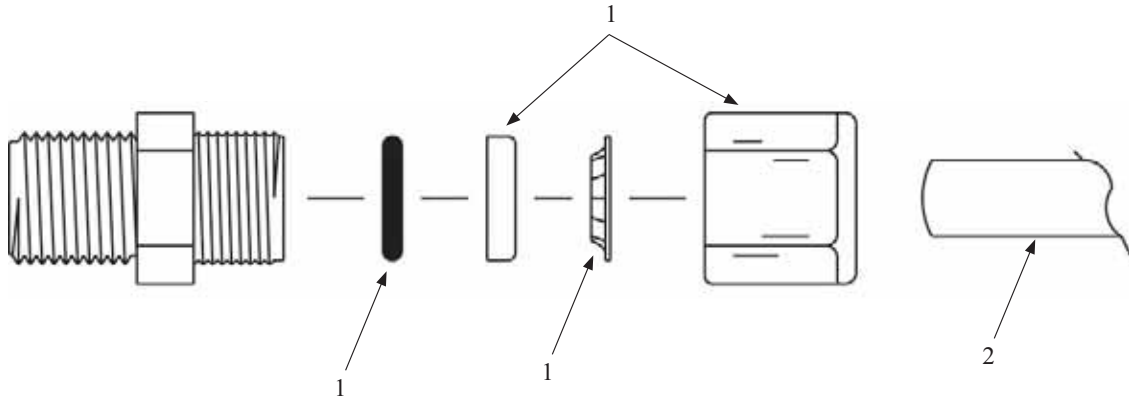
ITEM NO.	QTY.	PART NUMBER	DESCRIPTION
1	1	2432160669	HOSE HP - 6P
2	2	1317481969	SWIVEL FITTING - 6 SSP

*SPECIFY PART NUMBER AND DESCRIPTION OF SPECIFIC HIGH PRESSURE HOSE ASSEMBLY
OR IF A SPECIAL LENGTH IS REQUIRED, SPECIFY MEASURED OVERALL LENGTH: FITTING TO FITTING*



OVERALL LENGTH IS + / - 1/4" (6mm)

AVAILABLE TUBES AND FITTINGS



PART NO	DESCRIPTION
1. CONNECTOR MALE	
0204090669	1/4 inch tube x 1/8 inch mnpt
0204090869	1/4 inch tube x 1/4 inch mnpt
0204091669	3/8 inch tube x 1/8 inch mnpt
0204091769	3/8 inch tube x 1/4 inch mnpt
0204091869	3/8 inch tube x 3/8 inch mnpt
0204091969	3/8 inch tube x 1/2 inch mnpt
0204092069	3/8 inch tube x 3/4 inch mnpt
0204092269	1/2 inch tube x 1/8 inch mnpt
0204092369	1/2 inch tube x 1/4 inch mnpt
0204092469	1/2 inch tube x 3/8 inch mnpt
0204092569	1/2 inch tube x 1/2 inch mnpt
0204092669	1/2 inch tube x 3/4 inch mnpt
0204099069	5/8 inch tube x 1/8 inch mnpt
0204099169	5/8 inch tube x 1/4 inch mnpt
0204092869	5/8 inch tube x 3/8 inch mnpt
0204092969	5/8 inch tube x 1/2 inch mnpt
0204093169	5/8 inch tube x 3/4 inch mnpt
2. CONNECTOR FEMALE	
0204120669	1/4 inch tube x 1/8 inch fnpt
0204120869	1/4 inch tube x 1/4 inch fnpt
0204121769	3/8 inch tube x 1/4 inch fnpt
0204121869	3/8 inch tube x 3/8 inch fnpt
0204121969	3/8 inch tube x 1/2 inch fnpt
0204122569	1/2 inch tube x 1/2 inch fnpt

PART NO	DESCRIPTION
0204122669	1/2 inch tube x 3/4 inch fnpt
0204122969	5/8 inch tube x 1/2 inch fnpt
3. ELBOW 90 MALE	
0204020669	1/4 inch tube x 1/8 inch mnpt
0204020869	1/4 inch tube x 1/4 inch mnpt
0204020969	1/4 inch tube x 3/8 inch mnpt
0204021769	3/8 inch tube x 1/4 inch mnpt
0204021869	3/8 inch tube x 3/8 inch mnpt
0204021969	3/8 inch tube x 1/2 inch mnpt
0204022069	3/8 inch tube x 3/4 inch mnpt
0204022469	1/2 inch tube x 3/8 inch mnpt
0204022569	1/2 inch tube x 1/2 inch mnpt
0204022969	5/8 inch tube x 1/2 inch mnpt
4. ELBOW 90 FEMALE	
0204010669	1/4 inch tube x 1/8 inch fnpt
0204010869	1/4 inch tube x 1/4 inch fnpt
0204011769	3/8 inch tube x 1/4 inch fnpt
0204011869	3/8 inch tube x 3/8 inch fnpt
0204012469	1/2 inch tube x 3/8 inch fnpt
0204012569	1/2 inch tube x 1/2 inch fnpt
0204012969	5/8 inch tube x 1/2 inch fnpt
5. BRANCH TEE MALE	
0204150669	1/4 inch tube x 1/8 inch mnpt
0204151769	3/8 inch tube x 1/4 inch mnpt
0204152469	1/2 inch tube x 3/8 inch mnpt
0204152969	5/8 inch tube x 1/2 inch mnpt
6. RUN TEE MALE	
0204170669	1/4 inch tube x 1/8 inch mnpt
0204170869	1/4 inch tube x 1/4 inch mnpt
0204171769	3/8 inch tube x 1/4 inch mnpt
0204171869	3/8 inch tube x 3/8 inch mnpt
0204172469	1/2 inch tube x 3/8 inch mnpt
0204172569	1/2 inch tube x 1/2 inch mnpt
0204172969	5/8 inch tube x 1/2 inch mnpt
7. UNION TEE	
0204240869	1/4 inch tube
0204241869	3/8 inch tube
0204242469	1/2 inch tube x 3/8 inch tube
0204242569	1/2 inch tube

PART NO	DESCRIPTION
0204242869	5/8 inch tube x 3/8 inch tube
0204243069	5/8 inch tube
8. UNION	
0204210869	1/4 inch tube
0204211769	3/8 inch tube x 1/4 inch tube
0204211869	3/8 inch tube
0204212469	1/2 inch tube x 3/8 inch tube
0204212569	1/2 inch tube
0204212869	5/8 inch tube x 3/8 inch tube
0204212969	5/8 inch tube x 1/2 inch tube
0204213069	5/8 inch tube
9. UNION ELBOW 90	
0204220869	1/4 inch tube
0204221769	3/8 inch tube x 1/4 inch tube
0204221869	3/8 inch tube
0204222569	1/2 inch tube
0204223069	5/8 inch tube
10. UNION BULKHEAD	
0204270869	1/4 inch tube
0204271869	3/8 inch tube
0204272569	1/2 inch tube
11. TUBE	
0312122969	1/4 inch tube Black Nylon
0306152969	1/4 inch tube Blue Polypropylene
0306142969	1/4 inch tube Red Polypropylene
0312124169	3/8 inch tube Black Nylon
0306154169	3/8 inch tube Blue Polypropylene
0306144169	3/8 inch tube Red Polypropylene
0312125069	1/2 inch tube Black Nylon
0305125869	5/8 inch tube Black Polypropylene

TUBE COMPRESSION FITTINGS REPLACEMENT PARTS

ITEM	DESCRIPTION	PART NO.
FOR 1/4" O.D. TUBE		
1	NUT/SPACER/GRAB & O-RING 1/4"	0204-1/469
2	TUBE 1/4 BLACK	0312121969
FOR 3/8" O.D. TUBE		
1	NUT/SPACER/GRAB & O-RING 3/8"	0204-3/869
2	TUBE 3/8 BLACK	0312123569
FOR 1/2" O.D. TUBE		
1	NUT/SPACE/GRAB & O-RING 1/2"	0204-1/269
2	TUBE 1/2 BLACK NO SUBSTITUTE	0312124269
FOR 5/8" O.D. TUBE		
1	NUT/SPACER/GRAB & O-RING 5/8"	0204-5/869
2	TUBE 5/8 BLACK POLYPRO	0305125169

